



INVENTORS:

- 1) MOHD KHAIRUL ANUAR B.**
- 2) SYAHRUL AZIZI B. KAMARU**
- 3) NOR AFZAN BT ARIFFIN**
- 4) SITI AISYAH BT ISMAIL**
- 5) NURDINI BT IDRIS**
- 6) SITI SARA BT ABDUL HALII**

ETTTEX 200
FERROCEMENT
TABLE

**MAT KUPLI
JZAMAN**

M

**CONTACT DETAIL:
School of Environment
Universiti Malaysia Perlis
Kompleks Pusat Peng
02600 Arau Perlis**

TEL: 04 - 979 8626 FAX

NOVELTY AND COMPI



ntal Engineering
erlis
gajian Jejawi 3

X: 04 - 979 8636

MERCIAL POTENTIAL

INTRODUCTION

Ferrocement is a composite material or sculpture with cement, sand, water—often called a thin shell. Ferrocement is strong, durable, and economy.

Now most of the furniture such as chairs, tables, and benches are made from ferrocement. It is light material and easy to work with, resulting a light weight product.

PRODUCT DESCRIPTION

OBJECTIVES:

- To produce light weight portable garden table
- To produce portable garden table at low cost
- Neutral environment, strength, water resistance
- To produce ferrocement table for Urban areas

To make this product, ferrocement is used. As known ferrocement is a composite material or sculpture with cement, sand, water often called a thin shell. This one is made of short diagonals criss-crossing. The first step is to make a mesh of wire. The cement pushes through the mesh. As soon as the mix firms up a little (after about 15 minutes at room temperature), drape some plastic over the mesh. The reason for this is that cement absorbs water into its matrix. This part is called an acrylic additive topping cement call

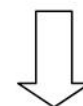
Material which is used in building inter and wire or mesh material—
cement has great strength

bench and table are made
al and has great strength. It

- The advantages of a v
low weight, water proo
in comparison with ste
- When a ferrocement s
will tend to fold inste
framework will hold th
applications. (Examp

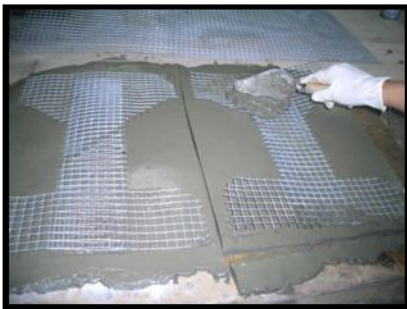
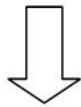
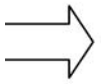
den table.
low cost.
r proof and long lasting
iiMAP purpose.

main agent in mixture. As
terial which is used in building
and wire or mesh material—
tremely rigid, with a lot of
t coat of cement is applied
and reattaches on the other
e (1 or 2 hours depending on
the work, to keep the mois-
ent gains its strength by incor-
icular bench was finished with
ed Datcherete. It's harder to

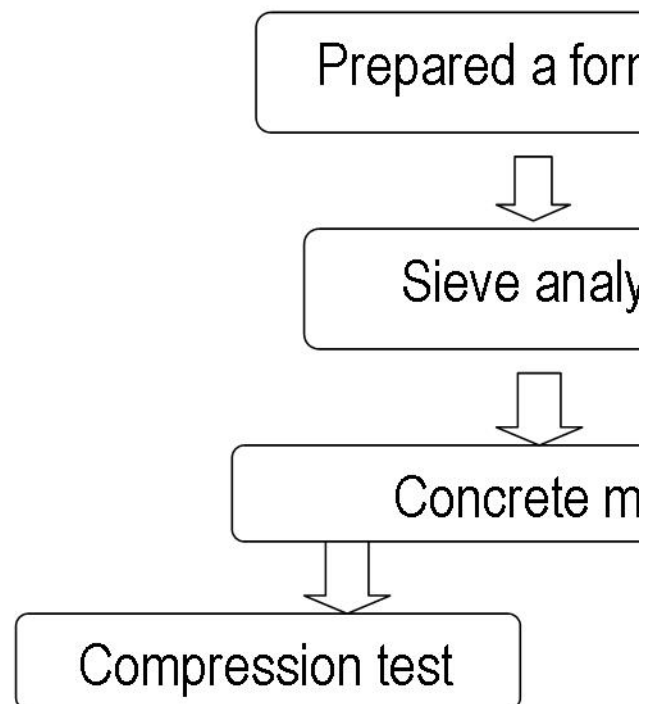


Well built ferrocement table are the
strong, fire proofing, and long lifetime
durable constructions.

When sheet is mechanically overloaded, it
leads to crack or rupture. The wire
mesh pieces together, which in some
cases (e.g. for boat hull, ceiling, roof) .



an acrylic additive topping cement can work than normal cement because it is water to slick it. I found that I got a nice face with a dry paintbrush after I had t wanted, usually about 1/2" for the patchment)



ed concrete. It's harder to
so sticky, and you can't use
e finish by dragging the sur-
roweled it up to the level l
hcrete (more for normal ce-



n work

sis

ix :



Slump test

