



INVENTORS:

**NUR SAKINAH BINTI AZHAR
HIZREEN BINTI HASHIM
THUNG WEI ENG
OOI YOONG LING
JAMILLUDDIN BIN MOHAMME**

INTRODUCTION

**EX
10**

BIOFILTRA

ED

**CONTACT DETAIL:
School of Environment
Universiti Malaysia Perlis
Kompleks Pusat Penga
02600 Arau Perlis**

TEL: 04 - 979 8626 FAX:

NOVELTY AND COMME

Banana stem

ATION

**al Engineering
lis
jian Jejawi 3**

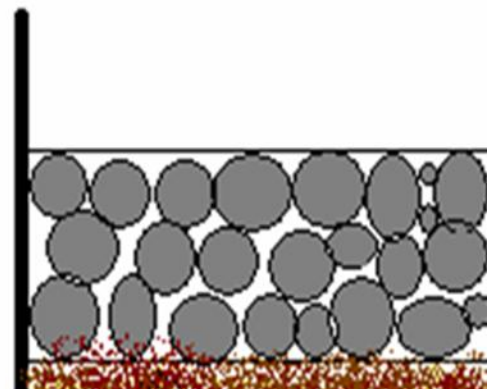
04 - 979 8636

ERCIAL POTENTIAL

Today's world, our Earth is been
We as the mankind must think w
a better place for living. At lea
play role as possible as we can
of our environment. We came u
in recycling water-based-deterg
water.

PRODUCT DESCRIPTION

This invention is created to mak
ing harm tremendously continue
and less help to reduce the los
used water (such water-containe
is technically cost less and make



abusing slowly painfully.
wisely to make our Earth as
st, at our home, we must
in maintaining the nature
up with the idea of method
ent to clean-can-be used

Our mother earth not be-
s. Such invention is more
st of water by filtering the
(ed-detergent). This method
e able.



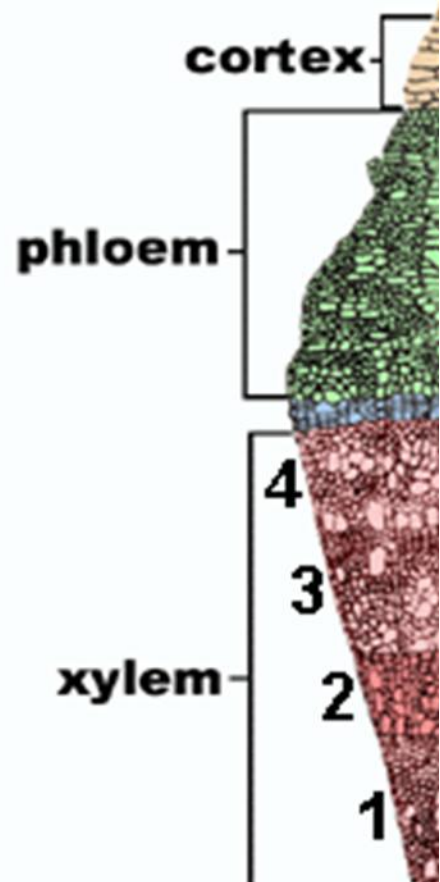
Banana stem

Banana stem is believed
unique structure of the st
Moreover, the substance
used as a soap discretior
water-contained-deterger

Charcoal

As for charcoal, it is well-

As we combine this two
more efficient.

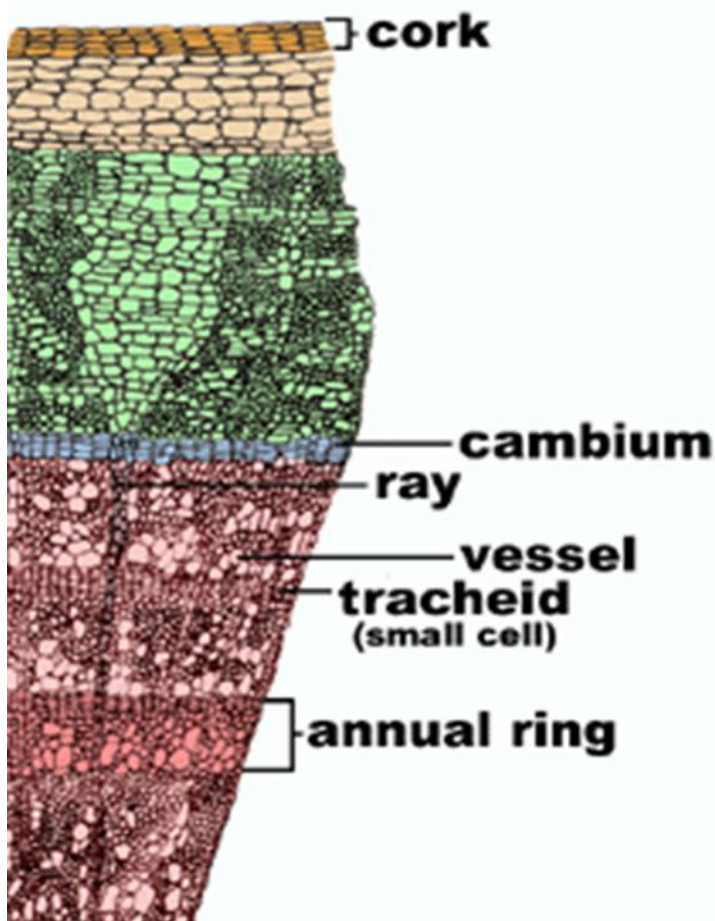


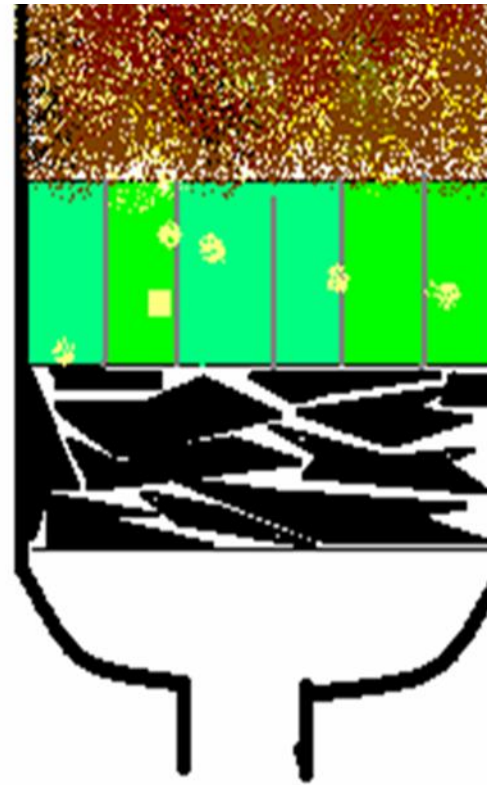
l to have 1001 purposes. As the em, it can be used as a filter.

è contained in the stem can be
1. It can neutralize the pH of
it.

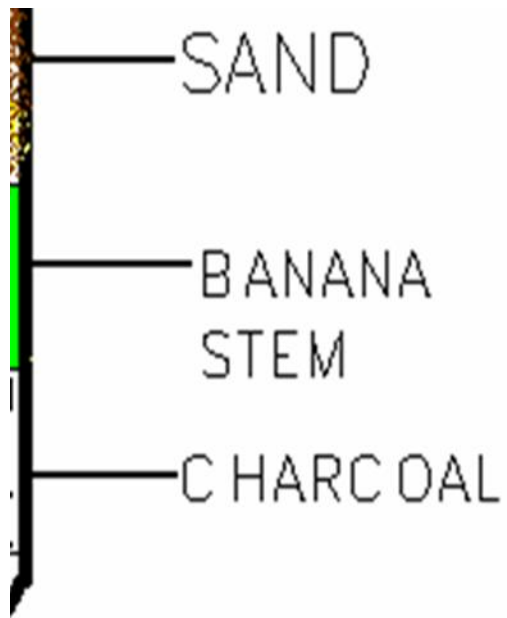
known as an organic cleaner.

element, filtration process can be



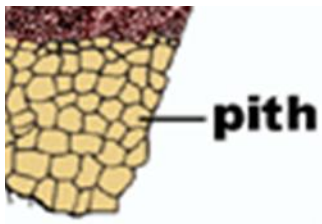


Ilmu



© E.M. Collins 2000





u.my