

BIBLIOGRAPHY

(i) Books

[1] Patricia Hartman, (2000). *Teach Yourself Visual Basic 6*. 1st Edition, IDG Books Worldwide, Inc, United States of America.

[2] David. Schneider, (2000). *Introduction to Visual Basic 6*. 1st Edition, The Prentice Hall Engineering Source, United States.

[3] Ted Coombs, (2001). *1001 Visual Basic Programmer's Tips*. 2st Edition, Delmar of Thomson Learning, In. United States.

[4] Alexis Leon, Mathews Leon (2002). *Access 2000 for Beginners*. 1st Edition, Tata McGraw-Hill Publishing Company Limited, New Delhi.

[5] Alexander & Sadiku, (2003). *Fundamental of Electric Circuit*. 2nd Edition, The McGraw-Hill Companies, United States of America.

(ii) Information from the URL

1) Feng, Perona, (1998). *Real Time Motion Detection System and Scene Segmentation*, <http://citeseer.ist.psu.edu/ghiasi03networked.html>, 1 August 2006

2) Karlene Nguyen, Gavin Yeung, (2002), *A General Framework for Tracking Objects in a Multi-Camera Environment*, <http://citeseer.ist.psu.edu/nguyen02general.html>, 5 August 2006

- 3) Jin, Favaro, 2001, *Real-time Feature Tracking and Outlier Rejection with Change*, <http://citeseer.ist.psu.edu/jin01realtime.html>, 12 August 2006
- 4) Hailin Jin Paolo Favaro Stefano Soatto Department of Electrical Engineering, (2001), *Real-Time Feature Tracking and Outlier Rejection with Changes in Illumination*, <http://citeseer.ist.psu.edu/434263.html>, 13 August 2006
- 5) Gavrilu, Davis, (1996), *Tracking humans in action: A 3d model-based approach*, <http://citeseer.ist.psu.edu/gavrila96tracking.html>, 18 August, 2006
- 6) Carlo Tomasi, Takeo Kanade, (1991) *Detection and Tracking of Point Features*, <http://citeseer.ist.psu.edu/tomasi91detection.html>, 28 August 2006.
- 7) Lin, (1999) *Tracking articulated objects in realtime range image sequence*, <http://citeseer.ist.psu.edu/lin99tracking.html>, 3 September 2006.
- 8) Grange, Casanova Fong, Baur (2002), *Vision-based sensor fusion for Human-Computer Interaction*, <http://citeseer.ist.psu.edu/grange02visionbased.html>, 9 September 2006.
- 9) Sebastien Grange Terrence, (2003). *TLIB: a real-time computer vision library for HCI*. <http://citeseer.ist.psu.edu/701175.html>, 10 September 2006.
- 10) Chun-Pai Jimmy Hsieh & Yang Cao Final Year Project A Cornell University, (2004) , *Home Security System*, <http://instruct1.cit.cornell.edu/courses/ee476/FinalProjects/s2004/ch236/homesecuritysystem.html>, 15 September 2006.
- 11) How Stuff Work, (1998). *How do motion sensing lights and burglar alarms work* <http://computer.howstuffworks.com/question238.htm>, 10 October, 2006
- 12) Global Corporation, (2006). *How infrared Motion Detector works*, <http://www.glolab.com/pirparts/infrared.html>, 1 January 2007
- 13) *Programming the parallel port in visual basic*. <http://www.aaroncake.net/electronics/vblpt.htm> , 3 February 2007
- 14) *Photodiode Amplifier via Parallel Port - The Code Project - Design and Strategy*, http://www.codeproject.com/useritems/Photodiode_Amplifier.asp, 14 February 2007.
- 15) *Parallel Port Interfacing, Inpout, Inpout32.dll, WINNT-2000-XP , Visual Basic, Visual C++*. <http://www.logix4u.net/>, 10 April 2007.

APPENDIX A(I)

(Table)

Table 3.1: List essential component of sensor circuitry

No	Description
R1	470 ohm ¼ W resistor
R2	10 K ohm ¼ W resistor
R3	4.7 K ohm ¼ W resistor
D1	1N4148 diode
L1/T1	Infrared LED and detector set
L2	Red LED
T2	MPS 3904

Table 3.1 (a): The Standard EIA Color Code Table per EIA-RS-279 is as follows:

Color	1 st band	2 nd band	3 rd band (multiplier)	4 th band (tolerance)	Temp. Coefficient
<u>Black</u>	0	0	$\times 10^0$		
<u>Brown</u>	1	1	$\times 10^1$	$\pm 1\%$ (F)	100 ppm
<u>Red</u>	2	2	$\times 10^2$	$\pm 2\%$ (G)	50 ppm
<u>Orange</u>	3	3	$\times 10^3$		15 ppm
<u>Yellow</u>	4	4	$\times 10^4$		25 ppm
<u>Green</u>	5	5	$\times 10^5$	$\pm 0.5\%$ (D)	
<u>Blue</u>	6	6	$\times 10^6$	$\pm 0.25\%$ (C)	
<u>Violet</u>	7	7	$\times 10^7$	$\pm 0.1\%$ (B)	
<u>Gray</u>	8	8	$\times 10^8$	$\pm 0.05\%$ (A)	
<u>White</u>	9	9	$\times 10^9$		
<u>Gold</u>			$\times 0.1$	$\pm 5\%$ (J)	
<u>Silver</u>			$\times 0.01$	$\pm 10\%$ (K)	
None				$\pm 20\%$ (M)	

Note: red to violet are the colors of the rainbow where red is low energy and violet is higher energy.

(Courtesy: http://en.wikipedia.org/wiki/Resistor_color_code)

APPENDIX A (II)

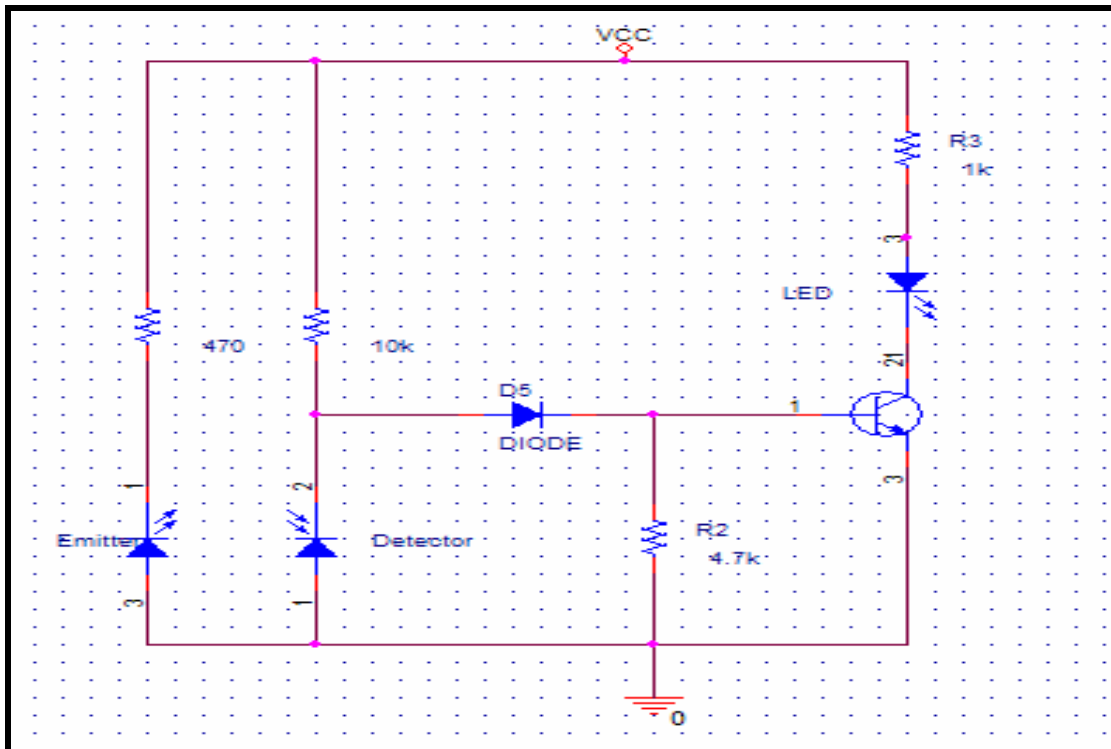


Figure A(1): Initial schematic of sensor circuit

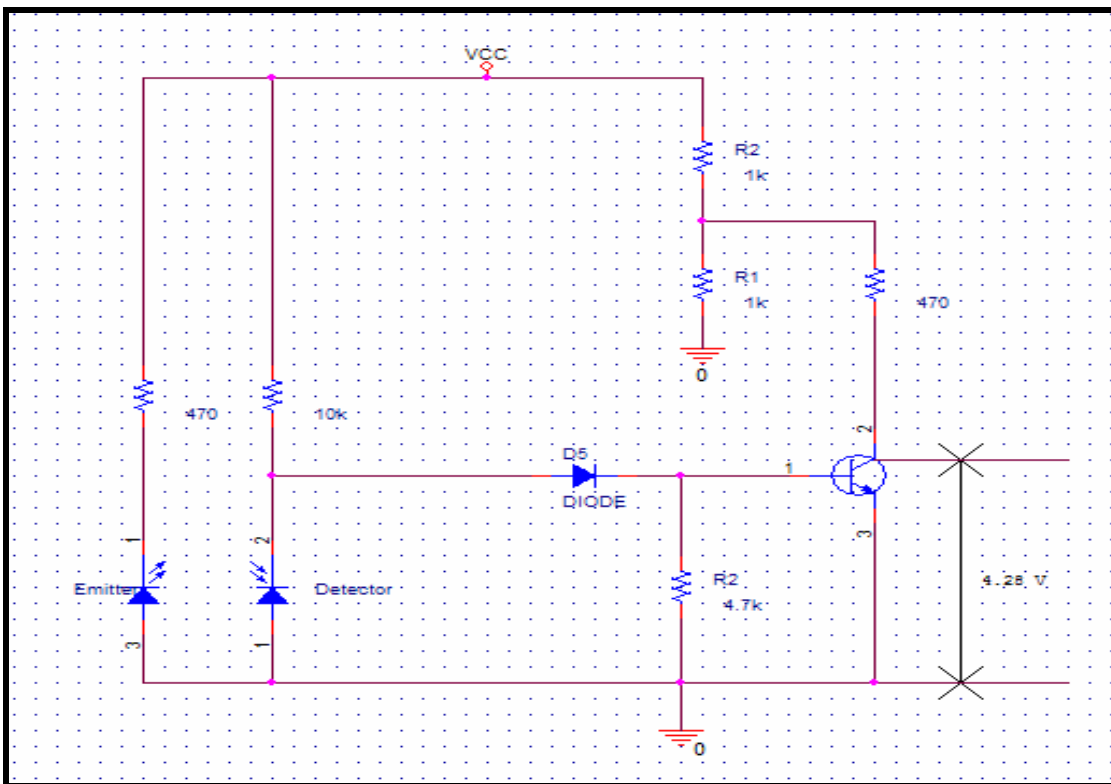


Figure A(2): Modification schematic of sensor circuit

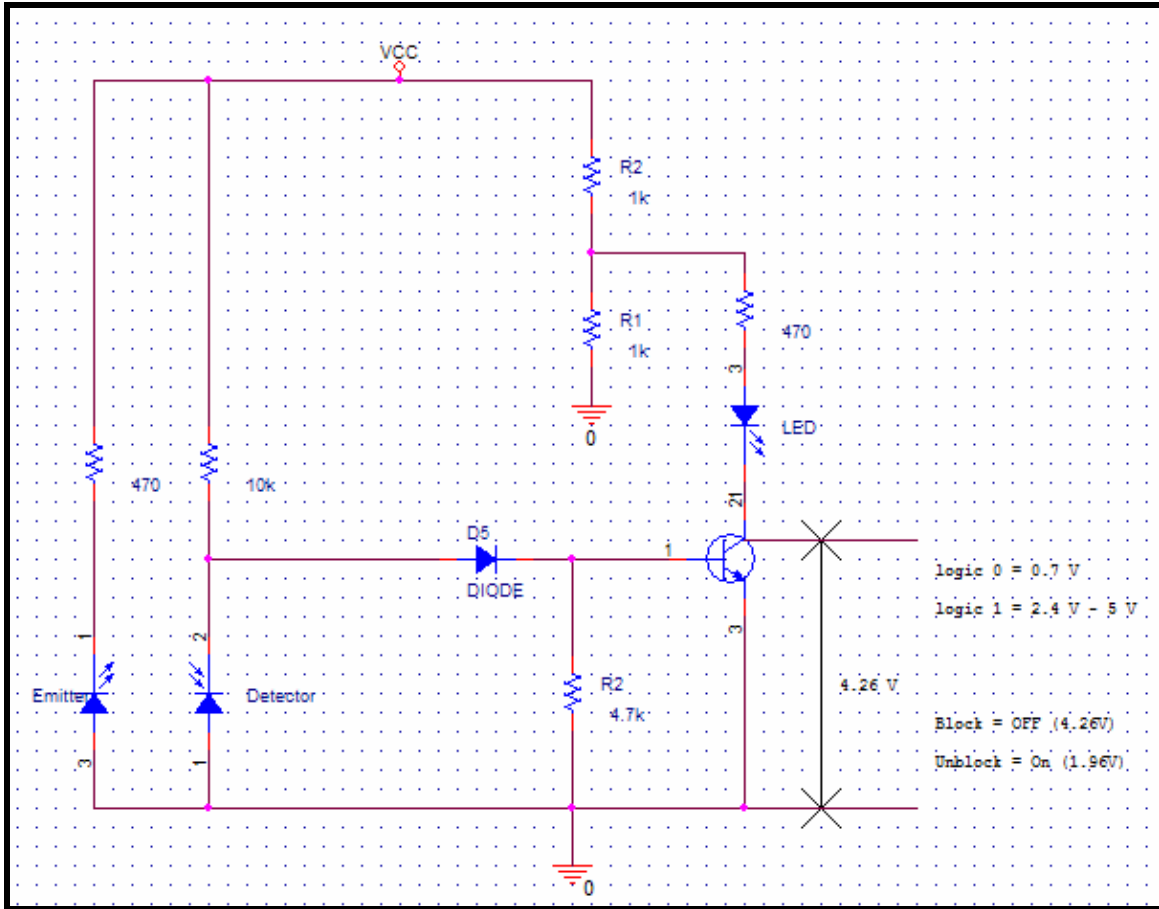


Figure A(3): Full modification schematic of sensor circuit

APPENDIX B

(Figure)



Figure (a): Configure of RTCAS project

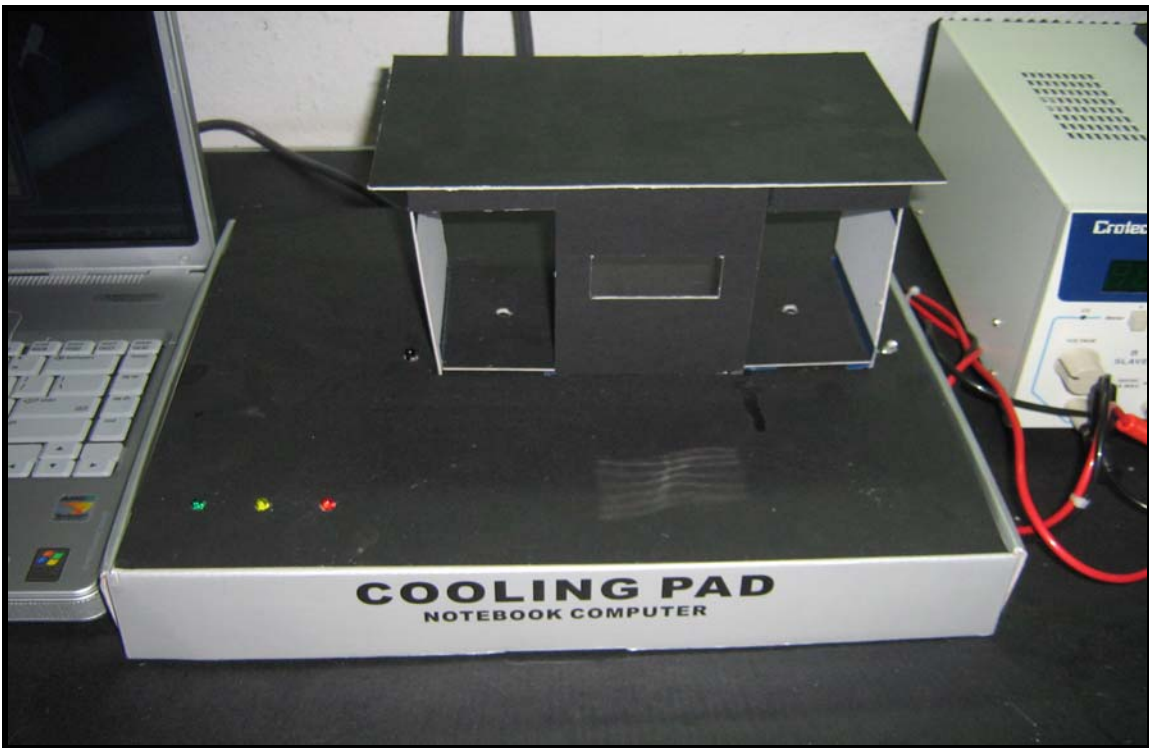


Figure (b): Prototype project

Types of semiconductor junction diode


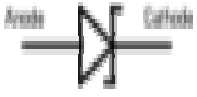
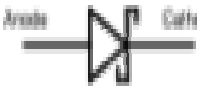
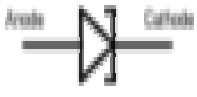
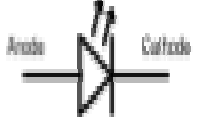
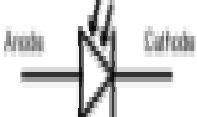

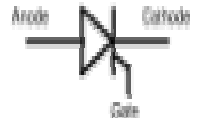
			
Diode	<u>Zener Diode</u>	<u>Schottky Diode</u>	<u>Tunnel Diode</u>
			
<u>Light-emitting diode</u>	<u>Photodiode</u>	<u>Varicap</u>	<u>SCR</u>

Figure 3.4: Some diode symbols

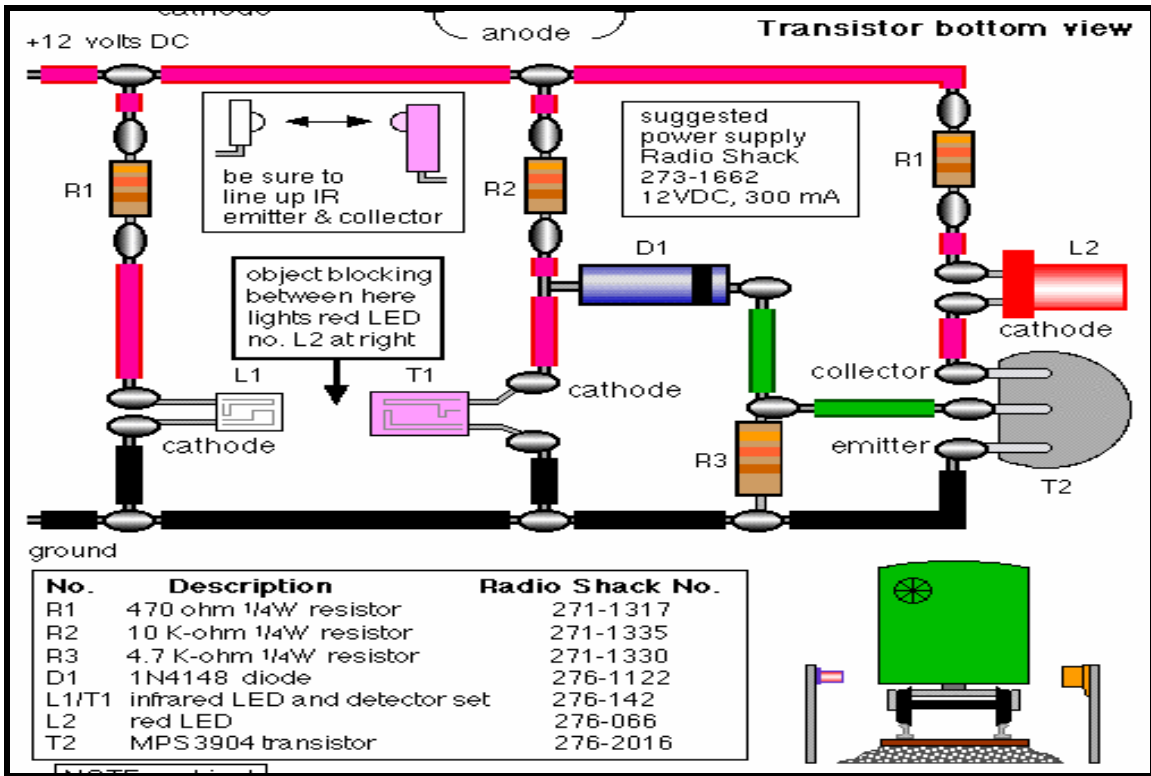


Figure 3.7: Design of detector circuit comprises IR emitter and IR photo detector

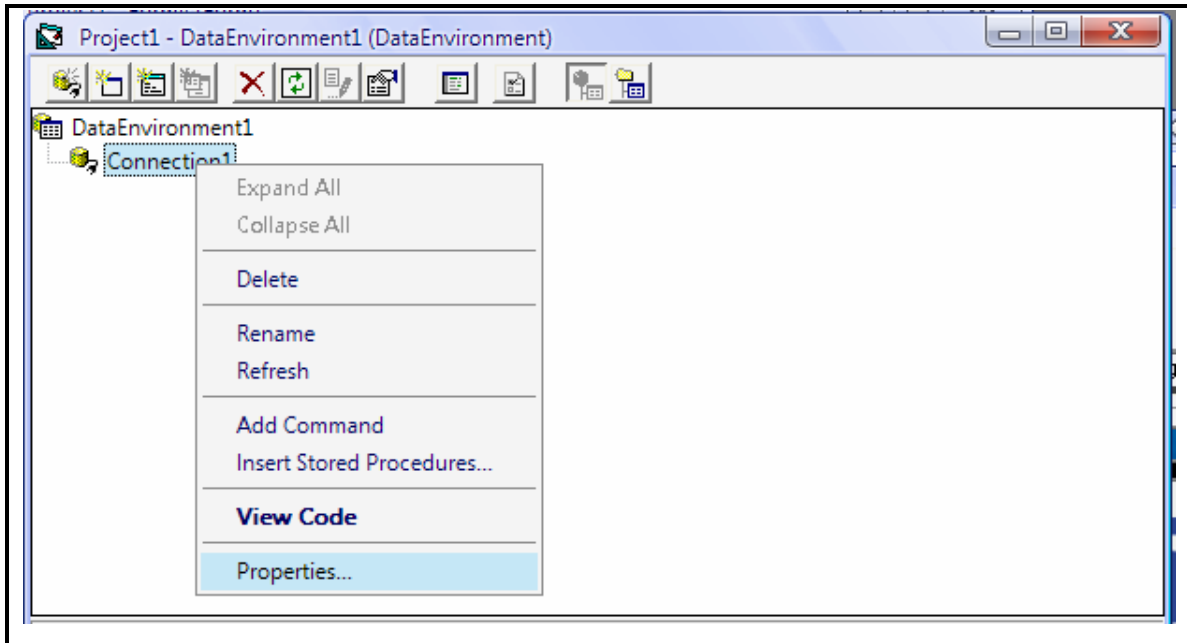


Figure 1

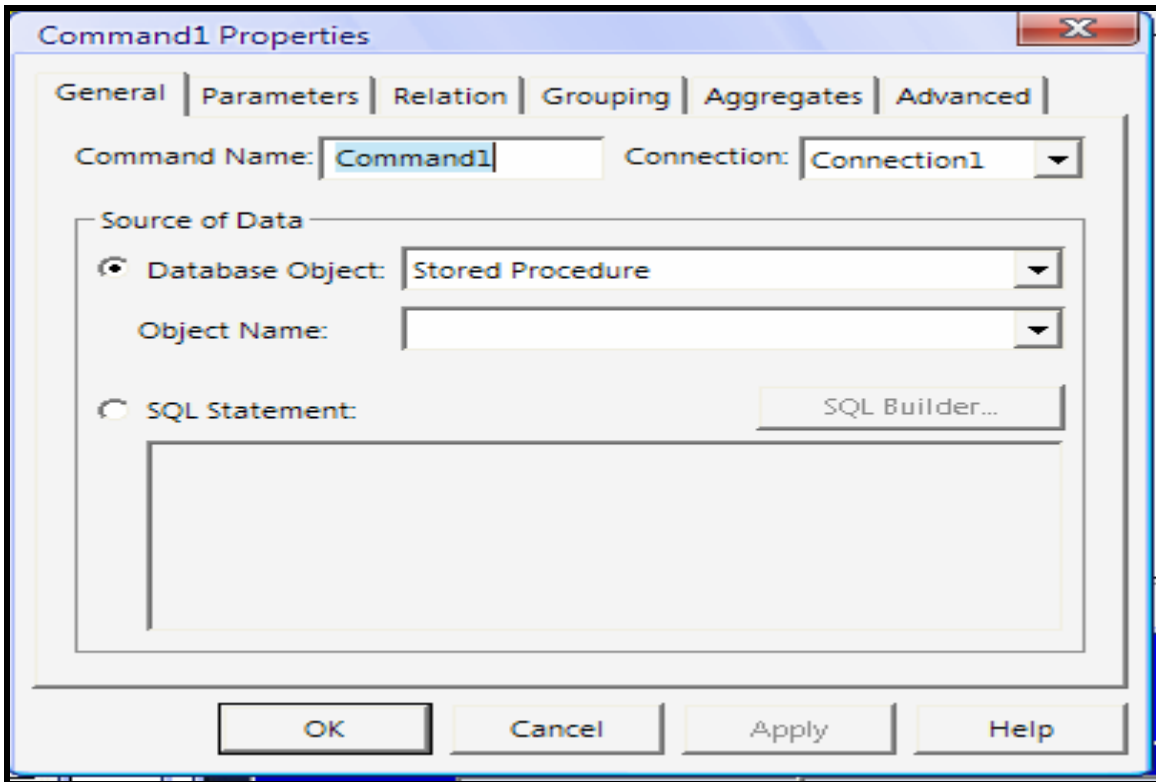


Figure 2

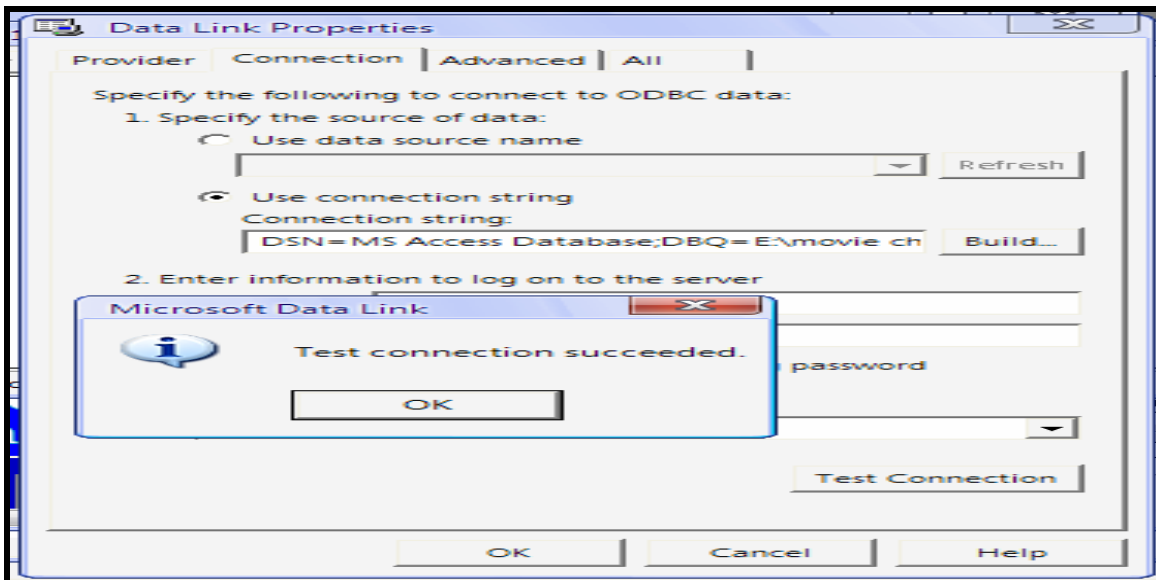


Figure 3

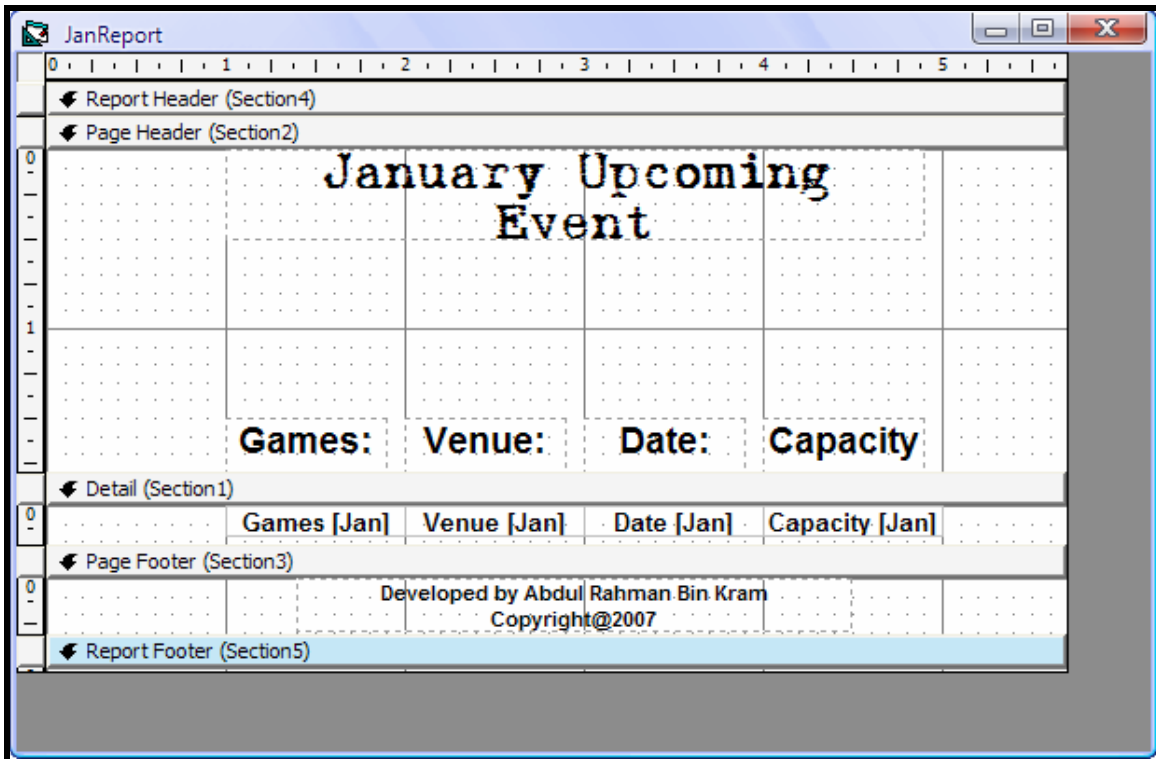


Figure 4

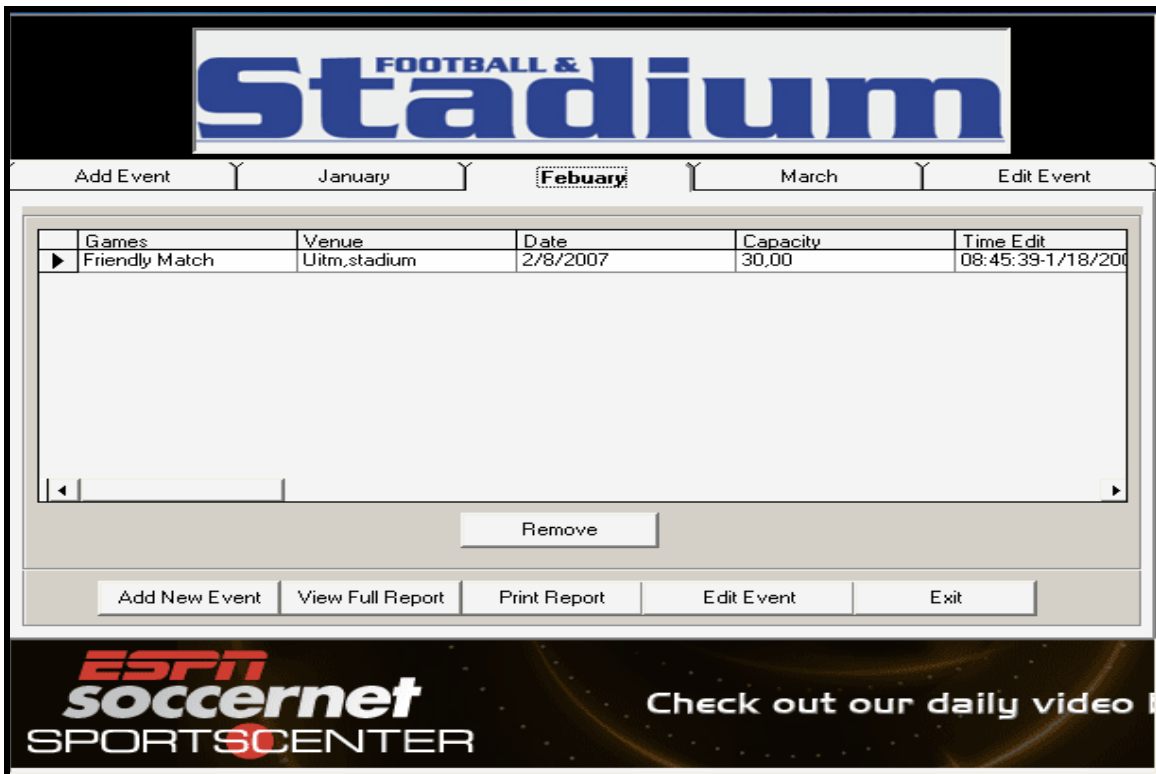



Figure 5

FOOTBALL & Stadium

[Add Event](#) |
 [January](#) |
 [February](#) |
 [March](#) |
 [Edit Event](#)

Games	Venue	Date	Capacity	Time Edit
▶ Super League	UniMAP, stadium	3/2/2007	50,000	11:23:44-2/2/2007
Friendly Match	Kangar, stadium	3/6/2007	30,000	10:15:03-2/5/2007
Athletics, MSSM	UniMAP, stadium	3/10/2007	50,000	12:18:58-2/7/2007
Super League	UiTM, stadium	3/12/2007	40,000	08:58:34-2/10/2007

|
 |
 |
 |



Check out our daily video!

Figure 6

APPENDIX C

(SOURCE CODE)

FRONT PAGE

```
Private Sub Command1_Click()  
    Timer1.Enabled = True  
    Timer3.Enabled = True  
    Timer9.Enabled = True  
    Timer10.Enabled = True  
    Frame1.Visible = True  
    Timer7.Enabled = False  
End Sub  
Private Sub Timer1_Timer()  
    Timer1.Enabled = True  
If Shape1(0).BackColor = &HFF0000 Then  
    Shape1(0).BackColor = &HC0&  
End If  
End Sub  
Private Sub Timer10_Timer()  
    Timer10.Enabled = True  
If Shape1(9).BackColor = &HFF0000 Then  
    Shape1(9).BackColor = &HC0&  
End If  
End Sub  
Private Sub Timer3_Timer()  
    Timer3.Enabled = True  
If Shape1(3).BackColor = &HFF0000 Then  
    Shape1(3).BackColor = &HC0&  
End If  
End Sub  
Private Sub Timer5_Timer()  
    'Static Count As Integer  
    If (p1.Left + p1.Width) <= 0 Then  
        p1.Left = Form1.Width  
    End If  
    p1.Left = p1.Left - 100  
End Sub  
Private Sub Timer7_Timer()  
    Timer1.Enabled = False  
    Timer3.Enabled = False  
    Timer9.Enabled = False  
    Timer10.Enabled = False  
    Frame1.Visible = False  
    Shape1(3).BackColor = &HFF0000  
    Shape1(0).BackColor = &HFF0000  
    Shape1(9).BackColor = &HFF0000  
    Shape1(10).BackColor = &HFF0000  
End Sub  
Private Sub Timer9_Timer()  
    Timer9.Enabled = True  
If Shape1(10).BackColor = &HFF0000 Then  
    Shape1(10).BackColor = &HC0&  
    Timer7.Enabled = True  
    Form1.Hide  
    Form2.Show  
End If  
End Sub
```

Login User

```
Private Sub Command1_Click()
Data1.DatabaseName = App.Path & "\\login.mdb"
Data1.RecordSource = "user"
Data1.Refresh
Data1.Recordset.FindFirst "Username = '" & Text1 & "'"

If Data1.Recordset("Username") <> Text1.Text Then
MsgBox "Your Username not in our data. If you are new user please click
button 'New User'. Click 'Exit' if wish to quit from this program.",
vbOKOnly
Text1.Text = ""
Exit Sub
End If

If Data1.Recordset("Username") = Text1.Text Then
If Data1.Recordset("Password") <> Text2.Text Then
MsgBox "Password not match with Username", vbOKOnly
Text2.Text = ""
Exit Sub
End If

If Data1.Recordset("Password") = Text2.Text Then
Form3.Show
Form2.Hide
Text1.Text = ""
Text2.Text = ""
Exit Sub
End If
End If

Label7.Visible = False
Label8.Visible = False
Label9.Visible = False
Label10.Visible = False
Label11.Visible = False
Label12.Visible = True
Picture6.BorderStyle = 1
End Sub

Private Sub Command2_Click()
Dim i As Integer
i = MsgBox(" Are you really want to exit this program? ", vbYesNo)
If i = vbYes Then

Form1.Show
Form2.Hide
Text1.Text = ""
Text2.Text = ""
End If

Label7.Visible = False
Label8.Visible = False
```

```

        Label9.Visible = False
        Label10.Visible = False
        Label11.Visible = False
        Picture6.BorderStyle = 1
    End Sub

Private Sub Command3_Click()
    Label7.Visible = False
    Label8.Visible = False
    Label9.Visible = False
    Label10.Visible = False
    Label11.Visible = False
    Label12.Visible = True
    Picture6.BorderStyle = 1
    Form2.Hide
    Form4.Show
    Text1.Text = ""
    Text2.Text = ""
End Sub

Private Sub Command4_Click()
    Data1.DatabaseName = App.Path & "\\login.mdb"
    Data1.RecordSource = "user"
    Data1.Refresh
    Data1.Recordset.FindFirst "Username = '" & Text1 & "'"

    If (Text2.Text = "") Or (Text1.Text = "") Then
        MsgBox "Enter your correct Username and Password", vbOKOnly
        Text2.Text = ""
    Exit Sub
    End If

    If Data1.Recordset("Username") <> Text1.Text Then
        MsgBox "Your Username not in our data. If you are new user please
        click button 'New User'. Click 'Exit' if wish to quit from this
        program.", vbOKOnly
        Text2.Text = ""
    Exit Sub
    End If

    If Data1.Recordset("Username") = Text1.Text Then
        If Data1.Recordset("Password") <> Text2.Text Then
            MsgBox "Password dosen't match with your Username", vbOKOnly
            Text2.Text = ""
            Exit Sub
        End If
    End If

    Dim i As Integer
    i = MsgBox("You really want to change your Password? Enter your
    'Username' and 'Password' then click 'Change Password' button.",
    vbYesNo)

    If i = vbYes Then
        Form2.Hide
        Form5.Show

```

```

        Text1.Text = ""
        Text2.Text = ""
    End If

    Label7.Visible = False
    Label8.Visible = False
    Label9.Visible = False
    Label10.Visible = False
    Label11.Visible = False
    Label12.Visible = True
    Picture6.BorderStyle = 1
End Sub

Private Sub Form_Load()
    Data1.DatabaseName = App.Path & "\login.mdb"
    Data1.RecordSource = "user"
    Data1.Refresh
    Do While Not Data1.Recordset.EOF
        Data1.Recordset.MoveNext
    Loop
End Sub

Private Sub mnuAccess_Click()
    Data1.DatabaseName = App.Path & "\login.mdb"
    Data1.RecordSource = "user"
    Data1.Refresh
    Data1.Recordset.FindFirst "Username = '" & Text1 & "'"

    If Data1.Recordset("Username") <> Text1.Text Then
        MsgBox "Undefined Username", vbOKOnly
    Exit Sub
    End If

    If Data1.Recordset("Username") = Text1.Text Then
        If Data1.Recordset("Password") <> Text2.Text Then
            MsgBox "Password not match with Username", vbOKOnly
            Exit Sub
        End If

        If Data1.Recordset("Password") = Text2.Text Then
            Form3.Show
            Form2.Hide
            Exit Sub
        End If
    End If
End Sub

Private Sub mnuChangePassword_Click()
    Dim i As Integer
    i = MsgBox("You really want to change your Password?", vbYesNo)

    If i = vbYes Then
        Form2.Hide
        Form5.Show
    End If
End Sub

```

```

Private Sub mnuExit_Click()
MsgBox " Are you really want to exit this program? "
    Form1.Show
    Form2.Hide
End Sub

Private Sub mnuNewUser_Click()
    Form2.Hide
    Form4.Show
End Sub

Private Sub Picture6_MouseMove(Button As Integer, Shift As Integer, X
As Single, Y As Single)
    Label7.Visible = True
    Label8.Visible = True
    Label9.Visible = True
    Label10.Visible = True
    Label11.Visible = True
    Label12.Visible = False
    Picture6.BorderStyle = 0
End Sub

Private Sub Timer1_Timer()
    'Static Count As Integer
    If (p1.Left + p1.Width) <= 0 Then
        p1.Left = Form1.Width
    End If
    p1.Left = p1.Left - 100
End Sub

Private Sub Timer2_Timer()
    'Static Count As Integer
    If (l3.Left + l3.Width) <= 0 Then
        l3.Left = Form1.Width
    End If
    l3.Left = l3.Left - 100
End Sub

Private Sub Timer3_Timer()
    Label7.Visible = True
End Sub

```

```

\*****
                                New User
\*****
Private Sub Command5_Click()
Dim r As Integer
If (List1.List(List1.ListIndex)) = "" Or (List1.List(List1.ListIndex))
= "Administrator" Then Exit Sub
r = MsgBox("Warning! You sure want to remove this username", vbYesNo)
If r = vbYes Then

Data1.DatabaseName = App.Path & "\login.mdb"
Data1.RecordSource = "user"
Data1.Refresh
Data1.Recordset.FindFirst "Username = '" & List1.Text & "'"
Data1.Recordset.Delete
List1.Clear
Data1.DatabaseName = App.Path & "\login.mdb"
Data1.RecordSource = "user"
Data1.Refresh
Do While Not Data1.Recordset.EOF
List1.AddItem Data1.Recordset("Username")
Data1.Recordset.MoveNext
Loop
End If
End Sub

Private Sub Command6_Click()
    Form4.Hide
    Form1.Show
End Sub

Private Sub Command7_Click()
Data1.DatabaseName = App.Path & "\login.mdb"
Data1.RecordSource = "user"
Data1.Refresh
Data1.Recordset.FindFirst "Username = '" & Text1 & "'"
'----- Create new Username-----
If (Data1.Recordset("Username") = (Text1.Text = "")) Or
(Data1.Recordset("Password") = (Text2.Text = "")) Or
(Data1.Recordset("Password") = (Text3.Text = "")) Then
    MsgBox "Please check your detail below 'Username' or 'Password'
    or 'Confirm Password' not yet fill in ", vbOKOnly
    Text2.Text = ""
    Text3.Text = ""
Exit Sub
End If

If Data1.Recordset("Username") = Text1.Text Then
    MsgBox "This Username already in used. Choose another
    'Username'.", vbOKOnly
Exit Sub
End If

If Data1.Recordset("Username") <> Text1.Text Then
    Data1.Recordset.AddNew
    Data1.Recordset("Username") = Text1.Text
    Data1.Recordset("Password") = Text2.Text

```

```

If Data1.Recordset("Password") <> Text3.Text Then
    MsgBox "Your Password dosen't match. Retype your Password",
    vbOKOnly
    Text2.Text = ""
    Text3.Text = ""
Exit Sub
End If

Data1.Recordset.Update
MsgBox "new user created", vbOKOnly

Text1.Text = ""
Text2.Text = ""
Text3.Text = ""
List1.Clear
Data1.DatabaseName = App.Path & "\\login.mdb"
Data1.RecordSource = "user"
Data1.Refresh
Do While Not Data1.Recordset.EOF
List1.AddItem Data1.Recordset("Username")
Data1.Recordset.MoveNext
Loop
End If
Exit Sub
End Sub

Private Sub Command8_Click()
    Form4.Hide
    Form2.Show
End Sub

Private Sub Form_Load()
Command1.BackColor = green
Data1.DatabaseName = App.Path & "\\login.mdb"
Data1.RecordSource = "user"
Data1.Refresh
Do While Not Data1.Recordset.EOF
List1.AddItem Data1.Recordset("Username")
Data1.Recordset.MoveNext
Loop
End Sub

```

```

\*****
Change Password
\*****
Private Sub Command2_Click()
Data1.DatabaseName = App.Path & "\login.mdb"
Data1.RecordSource = "user"
Data1.Refresh
Data1.Recordset.FindFirst "Username = '" & Text1 & "'"
'-----Create new Password-----
If (Text1.Text = "") Or (Text2.Text = "") Or (Text3.Text = "") Or
(Text6.Text = "") Then
MsgBox "Please complete your detail below 'Username' or 'Old
Password' or 'New Password Password' or 'Verify New Password' ! ",
vbOKOnly
Exit Sub
End If

'----- Wrong username-----
If Data1.Recordset("Username") <> Text1.Text Then
MsgBox "Your Username dosen't match. Retype your Username if wish to
continue change the password.", vbOKOnly
Text6.Text = ""
Text2.Text = ""
Text3.Text = ""
Exit Sub
End If

'----- correct username but wrong old password-----
If Data1.Recordset("Username") = Text1.Text Then
If Data1.Recordset("Password") <> Text6.Text Then
MsgBox "The old Password is invalid.", vbOKOnly
Exit Sub
End If
End If

'----- correct username but password already in used-----
If Data1.Recordset("Username") = Text1.Text Then
If (Data1.Recordset("Password") = Text2.Text) And
(Data1.Recordset("Password") = Text3.Text) Then
MsgBox "This Password is already in used. Choose another 'Password'.",
vbOKOnly
Text2.Text = ""
Text3.Text = ""
Exit Sub
End If
End If

'----- correct username but new password not match-----
If Data1.Recordset("Username") = Text1.Text Then
If Text2.Text <> Text3.Text Then
MsgBox "Your new Password not match. Retype your new password.",
vbOKOnly
Text2.Text = ""
Text3.Text = ""
Exit Sub
End If
End If

'----- correct username and successfully change new password-----
If Data1.Recordset("Username") = Text1.Text Then
If Data1.Recordset("Password") <> Text2.Text Then

```

```

        Data1.Recordset.Delete
        Data1.Refresh
        Text4.Text = Text1.Text
        Text5.Text = Text2.Text
        Data1.Recordset.AddNew
        Data1.Recordset("Username") = Text1.Text
        Data1.Recordset("Password") = Text2.Text
        Data1.Recordset.Update
        MsgBox "You have successfully change your new Password", vbOKOnly
        Text1.Text = ""
        Text2.Text = ""
        Text3.Text = ""
        Text6.Text = ""
        Data1.DatabaseName = App.Path & "\login.mdb"
        Data1.RecordSource = "user"
        Data1.Refresh
        Do While Not Data1.Recordset.EOF
        Data1.Recordset.MoveNext
        Loop
    End If
End If
End Sub
Private Sub Command3_Click()
    Text1.Text = ""
    Text2.Text = ""
    Text3.Text = ""
    Text6.Text = ""
End Sub
Private Sub Command4_Click()
    Dim i As Integer
    i = MsgBox("Are sure want to quit this program?", vbYesNo)
    If i = vbYes Then
        Form5.Hide
        Form2.Show
        Text4.Text = ""
        Text5.Text = ""
    End If
End Sub
Private Sub mnuChangePassword_Click()
    Data1.DatabaseName = App.Path & "\login.mdb"
    Data1.RecordSource = "user"
    Data1.Refresh
    Data1.Recordset.FindFirst "Username = '" & Text1 & "'"
    If (Text1.Text = "") Or (Text2.Text = "") Or (Text3.Text = "") Or
    (Text6.Text = "") Then
        MsgBox "Please complete your detail below 'Username' or 'Old Password'
        or 'New Password Password' or 'Verify New Password' ! ", vbOKOnly
    Exit Sub
    End If
    '1----- Wrong username-----
    If Data1.Recordset("Username") <> Text1.Text Then
        MsgBox "Your Username dosen't match. Retype your Username if wish to
        continue change the password.", vbOKOnly
        Text6.Text = ""
        Text2.Text = ""
        Text3.Text = ""
    Exit Sub

```



```

End If
'2----- correct username but wrong old password-----
If Data1.Recordset("Username") = Text1.Text Then
If Data1.Recordset("Password") <> Text6.Text Then
MsgBox "The old Password is invalid.", vbOKOnly
Exit Sub
End If
End If
End If
'3----- correct username but password already in used-----
If Data1.Recordset("Username") = Text1.Text Then
If (Data1.Recordset("Password") = Text2.Text) And
(Data1.Recordset("Password") = Text3.Text) Then
MsgBox "This Password is already in used. Choose another 'Password'.",
vbOKOnly
Text2.Text = ""
Text3.Text = ""
Exit Sub
End If
End If
'4---- correct username but new password not match-----
If Data1.Recordset("Username") = Text1.Text Then
If Text2.Text <> Text3.Text Then
MsgBox "Your new Password not match. Retype your new password.",
vbOKOnly
Text2.Text = ""
Text3.Text = ""
Exit Sub
End If
End If
'5--- correct username and successfully change new password---
If Data1.Recordset("Username") = Text1.Text Then
If Data1.Recordset("Password") <> Text2.Text Then
    Data1.Recordset.Delete
    Data1.Refresh
    Text4.Text = Text1.Text
    Text5.Text = Text2.Text
    Data1.Recordset.AddNew
    Data1.Recordset("Username") = Text1.Text
    Data1.Recordset("Password") = Text2.Text
    Data1.Recordset.Update
    MsgBox "You have successfully change your new Password", vbOKOnly
    Text1.Text = ""
    Text2.Text = ""
    Text3.Text = ""
    Text6.Text = ""
    Data1.DatabaseName = App.Path & "\login.mdb"
    Data1.RecordSource = "user"
    Data1.Refresh
    Do While Not Data1.Recordset.EOF
    Data1.Recordset.MoveNext
    Loop
End If
End If
End Sub
Private Sub mnuExit_Click()
    End
End Sub

```

APPENDIX D

(RESISTOR)

How to read Resistor Color Codes

Procedure:

- 1) First find the tolerance band, it will typically be gold (5%) and sometimes silver (10%).
- 2) Starting from the other end, identify the first band - write down the number associated with that color; in this case Blue is 6.
- 3) Now 'read' the next color, here it is red so write down a '2' next to the six. (you should have '62' so far.)
- 4) Now read the third or 'multiplier' band and write down that number of zeros.
- 5) In this example it is two so we get '6200' or '6,200'. If the 'multiplier' band is Black (for zero) don't write any zeros down.
- 6) If the 'multiplier' band is Gold move the decimal point one to the left. If the 'multiplier' band is Silver move the decimal point two places to the left. If the resistor has one more band past the tolerance band it is a quality band.
- 7) Read the number as the '% Failure rate per 1000 hour' this is rated assuming full wattage being applied to the resistors. (To get better failure rates, resistors are typically specified to have twice the needed wattage dissipation that the circuit produces). Some resistors use this band for tempco information. 1% resistors have three bands to read digits to the left of the multiplier. They have a different temperature coefficient in order to provide the 1% tolerance.
- 8) At 1% the temperature coefficient starts to become an important factor. At +/- 200 ppm a change in temperature of 25 Deg C causes a value change of up to 1%

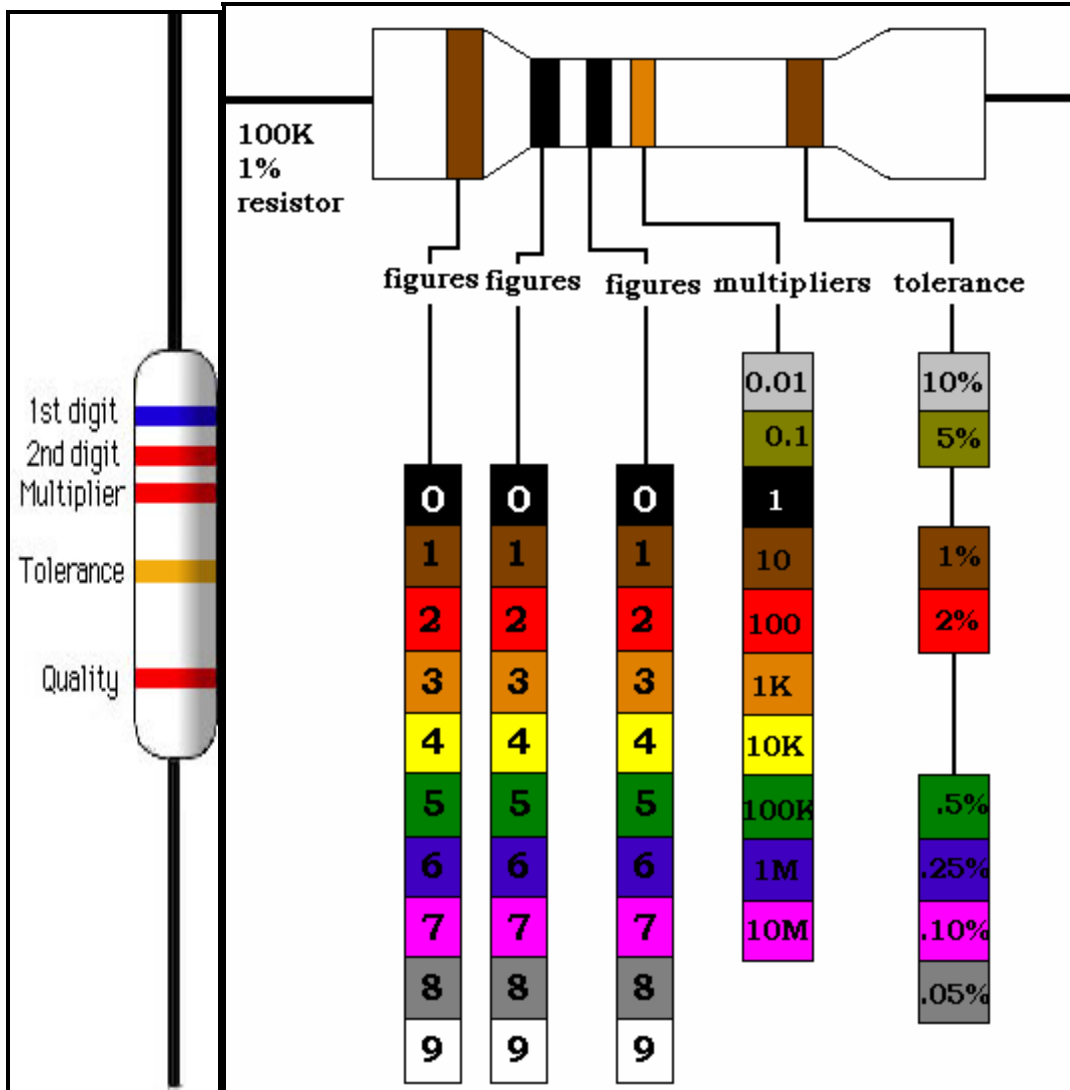


Figure 3.2: Resistor color code

(Courtesy:

http://www.createonline.net/Tutorials/Resistor_color_code_2/resistor_colorcode.htm)

The mnemonic

Bad **B**oys **R**avish **O**nly **Y**oung **G**irls **B**ut **V**iolet **G**ives **W**illingly

Black is also easy to remember as zero because of the nothingness common to both.

APPENDIX E

(DIODE)

(1) Normal (p-n) diodes

Usually made of doped silicon and rarely made doped of germanium. Before the development of modern silicon power rectifier diodes, cuprous oxide and later selenium was used. This diode operate in low efficiency gave it a much higher forward voltage drop typically 1.4–1.7 V per "cell," with multiple cells stacked to increase the peak inverse voltage rating in high voltage rectifiers, and required a large heat sink, much larger than a silicon diode of the same current ratings would require.

(2) Schottky diodes

Schottky diodes are constructed from a metal to semiconductor contact. They have a lower forward voltage drop than a standard PN junction diode. Their forward voltage drop at forward currents of about 1 mA is in the range 0.15 V to 0.45 V, which makes them useful in voltage clamping applications and prevention of transistor saturation. They can also be used as low loss rectifiers although their reverse leakage current is generally much higher than non Schottky rectifiers. Schottky diodes are majority carrier devices and so do not suffer from minority carrier storage problems that slow down most normal diodes. They also tend to have much lower junction capacitance than PN diodes and this contributes towards their high switching speed and their suitability in high speed circuits and RF devices such as mixers and detectors.

(3) PIN diodes

A PIN diode has a central un-doped, or intrinsic, layer, forming a p-type / intrinsic / n-type structure. Width of the intrinsic layer is greater than that of P and N. They are used as radio frequency switches, similar to varactor diodes but with a more sudden change in capacitance. They are also used as large volume ionizing

radiation detectors and as photo detectors. PIN diodes are also used in power electronics, as their central layer can withstand high voltages. Furthermore, the PIN structure can be found in many power semiconductor devices, such as IGBTs, power MOSFETs, and thyristors.

(3) Zener diodes

(pronounced /zi : nər/) Diodes that can be made to conduct backwards. This effect, called Zener breakdown, occurs at a precisely defined voltage, allowing the diode to be used as a precision voltage reference. In practical voltage reference circuits Zener and switching diodes are connected in series and opposite directions to balance the temperature coefficient to near zero. Some devices labeled as high-voltage Zener diodes are actually avalanche diodes (see below). Two (equivalent) Zeners in series and in reverse order, in the same package, constitute a transient absorber (or Transorb, a registered trademark). They are named for Dr. Clarence Melvin Zener of Southern Illinois University, inventor of the device.

(4) Photodiodes

Semiconductors are subject to optical charge carrier generation and therefore most are packaged in light blocking material. If they are packaged in materials that allow light to pass, their photosensitivity can be utilized. Photodiodes can be used as solar cells, and in photometry.

APPENDIX C

(SOURCE CODE)

FRONT PAGE

```
Private Sub Command1_Click()
Timer1.Enabled = True
'Timer2.Enabled = True
Timer3.Enabled = True
'Timer4.Enabled = True
Timer9.Enabled = True
Timer10.Enabled = True
Frame1.Visible = True
Timer7.Enabled = False
End Sub

Private Sub Timer1_Timer()
Timer1.Enabled = True
If Shape1(0).BackColor = &HFF0000 Then
    Shape1(0).BackColor = &HC0&
End If
End Sub

Private Sub Timer10_Timer()
Timer10.Enabled = True
If Shape1(9).BackColor = &HFF0000 Then
    Shape1(9).BackColor = &HC0&
End If
End Sub

Private Sub Timer3_Timer()
Timer3.Enabled = True
If Shape1(3).BackColor = &HFF0000 Then
    Shape1(3).BackColor = &HC0&
End If
End Sub

Private Sub Timer5_Timer()
    'Static Count As Integer
    If (p1.Left + p1.Width) <= 0 Then
        p1.Left = Form1.Width
    End If
    p1.Left = p1.Left - 100
End Sub

Private Sub Timer7_Timer()
Timer1.Enabled = False
Timer3.Enabled = False
Timer9.Enabled = False
Timer10.Enabled = False
Frame1.Visible = False
Shape1(3).BackColor = &HFF0000
Shape1(0).BackColor = &HFF0000
Shape1(9).BackColor = &HFF0000
Shape1(10).BackColor = &HFF0000
End Sub

Private Sub Timer9_Timer()
```

```

Timer9.Enabled = True
If Shapel(10).BackColor = &HFF0000 Then
    Shapel(10).BackColor = &HC0&
Timer7.Enabled = True
Form1.Hide
Form2.Show
End If
End Sub

```

Login User

```

Private Sub Command1_Click()
Data1.DatabaseName = App.Path & "\login.mdb"
Data1.RecordSource = "user"
Data1.Refresh
Data1.Recordset.FindFirst "Username = '" & Text1 & "'"

If Data1.Recordset("Username") <> Text1.Text Then
MsgBox "Your Username not in our data. If you are new user please click
button 'New User'. Click 'Exit' if wish to quit from this program.",
vbOKOnly
Text1.Text = ""
Exit Sub
End If

```

```

If Data1.Recordset("Username") = Text1.Text Then
    If Data1.Recordset("Password") <> Text2.Text Then
MsgBox "Password not match with Username", vbOKOnly
Text2.Text = ""
Exit Sub
End If

```

```

    If Data1.Recordset("Password") = Text2.Text Then
Form3.Show
Form2.Hide
Text1.Text = ""
Text2.Text = ""
Exit Sub
End If

```

```
End If
```

```

Label7.Visible = False
Label8.Visible = False
Label9.Visible = False
Label10.Visible = False
Label11.Visible = False
Label12.Visible = True
Picture6.BorderStyle = 1

```

```
End Sub
```

```

Private Sub Command2_Click()
Dim i As Integer
i = MsgBox(" Are you really want to exit this program? ", vbYesNo)
If i = vbYes Then

```

```

        Form1.Show
        Form2.Hide
        Text1.Text = ""
        Text2.Text = ""
    End If

    Label7.Visible = False
    Label8.Visible = False
    Label9.Visible = False
    Label10.Visible = False
    Label11.Visible = False
    Picture6.BorderStyle = 1
End Sub

Private Sub Command3_Click()
    Label7.Visible = False
    Label8.Visible = False
    Label9.Visible = False
    Label10.Visible = False
    Label11.Visible = False
    Label12.Visible = True
    Picture6.BorderStyle = 1
    Form2.Hide
    Form4.Show
    Text1.Text = ""
    Text2.Text = ""
End Sub

Private Sub Command4_Click()
    Data1.DatabaseName = App.Path & "\login.mdb"
    Data1.RecordSource = "user"
    Data1.Refresh
    Data1.Recordset.FindFirst "Username = '" & Text1 & "'"

    If (Text2.Text = "") Or (Text1.Text = "") Then
        MsgBox "Enter your correct Username and Password", vbOKOnly
        Text2.Text = ""
    Exit Sub
    End If

    If Data1.Recordset("Username") <> Text1.Text Then
        MsgBox "Your Username not in our data. If you are new user please
        click button 'New User'. Click 'Exit' if wish to quit from this
        program.", vbOKOnly
        Text2.Text = ""
    Exit Sub
    End If

    If Data1.Recordset("Username") = Text1.Text Then
        If Data1.Recordset("Password") <> Text2.Text Then
            MsgBox "Password dosen't match with your Username", vbOKOnly
            Text2.Text = ""
            Exit Sub
        End If
    End If
End If

```

```

Dim i As Integer
i = MsgBox("You really want to change your Password? Enter your
'Username' and 'Password' then click 'Change Password' button.",
vbYesNo)

If i = vbYes Then
    Form2.Hide
    Form5.Show
    Text1.Text = ""
    Text2.Text = ""
End If

    Label7.Visible = False
    Label8.Visible = False
    Label9.Visible = False
    Label10.Visible = False
    Label11.Visible = False
    Label12.Visible = True
    Picture6.BorderStyle = 1
End Sub

Private Sub Form_Load()
Data1.DatabaseName = App.Path & "\login.mdb"
Data1.RecordSource = "user"
Data1.Refresh
Do While Not Data1.Recordset.EOF
Data1.Recordset.MoveNext
Loop
End Sub

Private Sub mnuAccess_Click()
Data1.DatabaseName = App.Path & "\login.mdb"
Data1.RecordSource = "user"
Data1.Refresh
Data1.Recordset.FindFirst "Username = '" & Text1 & "'"

If Data1.Recordset("Username") <> Text1.Text Then
    MsgBox "Undefined Username", vbOKOnly
Exit Sub
End If

If Data1.Recordset("Username") = Text1.Text Then
    If Data1.Recordset("Password") <> Text2.Text Then
        MsgBox "Password not match with Username", vbOKOnly
        Exit Sub
    End If

    If Data1.Recordset("Password") = Text2.Text Then
        Form3.Show
        Form2.Hide
        Exit Sub
    End If
End If
End Sub

```

```

Private Sub mnuChangePassword_Click()
Dim i As Integer
i = MsgBox("You really want to change your Password?", vbYesNo)

If i = vbYes Then
    Form2.Hide
    Form5.Show
End If
End Sub

Private Sub mnuExit_Click()
MsgBox " Are you really want to exit this program? "
    Form1.Show
    Form2.Hide
End Sub

Private Sub mnuNewUser_Click()
    Form2.Hide
    Form4.Show
End Sub

Private Sub Picture6_MouseMove(Button As Integer, Shift As Integer, X
As Single, Y As Single)
    Label7.Visible = True
    Label8.Visible = True
    Label9.Visible = True
    Label10.Visible = True
    Label11.Visible = True
    Label12.Visible = False
    Picture6.BorderStyle = 0
End Sub

Private Sub Timer1_Timer()
    'Static Count As Integer
    If (p1.Left + p1.Width) <= 0 Then
        p1.Left = Form1.Width
    End If
    p1.Left = p1.Left - 100
End Sub

Private Sub Timer2_Timer()
    'Static Count As Integer
    If (l3.Left + l3.Width) <= 0 Then
        l3.Left = Form1.Width
    End If
    l3.Left = l3.Left - 100
End Sub

Private Sub Timer3_Timer()
Label7.Visible = True
End Sub

\*****
Access Main System
\*****
Private Sub Combo1_Click()

```

```

        Text4.Text = Combo1.Text
        Combo1.Text = ""
End Sub

Private Sub Combo10_Click()
Text13.Text = Combo10.Text
Combo10.Text = ""

'-----Selectdate-----
If Text13.Text = "January" Then
    Frame16.Visible = True
    Frame17.Visible = True
    Frame18.Visible = True
    Frame19.Visible = True
    Frame20.Visible = True
    Picture11.Visible = True
    Picture12.Visible = True
    Picture13.Visible = True
    Combo13.AddItem " 1/1/2007"
    Combo13.AddItem " 1/2/2007"
    Combo13.AddItem " 1/3/2007"
    Combo13.AddItem " 1/4/2007"
    Combo13.AddItem " 1/5/2007"
    Combo13.AddItem " 1/6/2007"
    Combo13.AddItem " 1/7/2007"
    Combo13.AddItem " 1/8/2007"
    Combo13.AddItem " 1/9/2007"
    Combo13.AddItem " 1/10/2007"
    Combo13.AddItem " 1/11/2007"
    Combo13.AddItem " 1/12/2007"
    Combo13.AddItem " 1/13/2007"
    Combo13.AddItem " 1/14/2007"
    Combo13.AddItem " 1/15/2007"
    Combo13.AddItem " 1/16/2007"
    Combo13.AddItem " 1/17/2007"
    Combo13.AddItem " 1/18/2007"
    Combo13.AddItem " 1/19/2007"
    Combo13.AddItem " 1/20/2007"
    Combo13.AddItem " 1/21/2007"
    Combo13.AddItem " 1/22/2007"
    Combo13.AddItem " 1/23/2007"
    Combo13.AddItem " 1/24/2007"
    Combo13.AddItem " 1/25/2007"
    Combo13.AddItem " 1/26/2007"
    Combo13.AddItem " 1/27/2007"
    Combo13.AddItem " 1/28/2007"
    Combo13.AddItem " 1/29/2007"
    Combo8.AddItem " 1/1/2007"
    Combo8.AddItem " 1/2/2007"
    Combo8.AddItem " 1/3/2007"
    Combo8.AddItem " 1/4/2007"
    Combo8.AddItem " 1/5/2007"
    Combo8.AddItem " 1/6/2007"
    Combo8.AddItem " 1/7/2007"
    Combo8.AddItem " 1/8/2007"
    Combo8.AddItem " 1/9/2007"
    Combo8.AddItem " 1/10/2007"

```

```
Combo8.AddItem " 1/11/2007"  
Combo8.AddItem " 1/12/2007"  
Combo8.AddItem " 1/13/2007"  
Combo8.AddItem " 1/14/2007"  
Combo8.AddItem " 1/15/2007"  
Combo8.AddItem " 1/16/2007"  
Combo8.AddItem " 1/17/2007"  
Combo8.AddItem " 1/18/2007"  
Combo8.AddItem " 1/19/2007"  
Combo8.AddItem " 1/20/2007"  
Combo8.AddItem " 1/21/2007"  
Combo8.AddItem " 1/22/2007"  
Combo8.AddItem " 1/23/2007"  
Combo8.AddItem " 1/24/2007"  
Combo8.AddItem " 1/25/2007"  
Combo8.AddItem " 1/26/2007"  
Combo8.AddItem " 1/27/2007"  
Combo8.AddItem " 1/28/2007"  
Combo8.AddItem " 1/29/2007"  
Combo8.AddItem " 1/30/2007"  
Combo8.AddItem " 1/31/2007"  
Combo8.AddItem " 1/30/2007"  
Combo8.AddItem " 1/31/2007"  
End If  
  
If Text13.Text = "Febuary" Then  
Frame16.Visible = True  
Frame17.Visible = True  
Frame18.Visible = True  
Frame19.Visible = True  
Frame20.Visible = True  
Picture11.Visible = True  
Picture12.Visible = True  
Picture13.Visible = True  
Combo13.AddItem " 2/1/2007"  
Combo13.AddItem " 2/2/2007"  
Combo13.AddItem " 2/3/2007"  
Combo13.AddItem " 2/4/2007"  
Combo13.AddItem " 2/5/2007"  
Combo13.AddItem " 2/6/2007"  
Combo13.AddItem " 2/7/2007"  
Combo13.AddItem " 2/8/2007"  
Combo13.AddItem " 2/9/2007"  
Combo13.AddItem " 2/10/2007"  
Combo13.AddItem " 2/11/2007"  
Combo13.AddItem " 2/12/2007"  
Combo13.AddItem " 2/13/2007"  
Combo13.AddItem " 2/14/2007"  
Combo13.AddItem " 2/15/2007"  
Combo13.AddItem " 2/16/2007"  
Combo13.AddItem " 2/17/2007"  
Combo13.AddItem " 2/18/2007"  
Combo13.AddItem " 2/19/2007"  
Combo13.AddItem " 2/20/2007"  
Combo13.AddItem " 2/21/2007"  
Combo13.AddItem " 2/22/2007"  
Combo13.AddItem " 2/23/2007"
```

```
Combo13.AddItem " 2/24/2007"  
Combo13.AddItem " 2/25/2007"  
Combo13.AddItem " 2/26/2007"  
Combo13.AddItem " 2/27/2007"  
Combo13.AddItem " 2/28/2007"  
Combo13.AddItem " 2/29/2007"  
Combo8.AddItem " 2/1/2007"  
Combo8.AddItem " 2/2/2007"  
Combo8.AddItem " 2/3/2007"  
Combo8.AddItem " 2/4/2007"  
Combo8.AddItem " 2/5/2007"  
Combo8.AddItem " 2/6/2007"  
Combo8.AddItem " 2/7/2007"  
Combo8.AddItem " 2/8/2007"  
Combo8.AddItem " 2/9/2007"  
Combo8.AddItem " 2/10/2007"  
Combo8.AddItem " 2/11/2007"  
Combo8.AddItem " 2/12/2007"  
Combo8.AddItem " 2/13/2007"  
Combo8.AddItem " 2/14/2007"  
Combo8.AddItem " 2/15/2007"  
Combo8.AddItem " 2/16/2007"  
Combo8.AddItem " 2/17/2007"  
Combo8.AddItem " 2/18/2007"  
Combo8.AddItem " 2/19/2007"  
Combo8.AddItem " 2/20/2007"  
Combo8.AddItem " 2/21/2007"  
Combo8.AddItem " 2/22/2007"  
Combo8.AddItem " 2/23/2007"  
Combo8.AddItem " 2/24/2007"  
Combo8.AddItem " 2/25/2007"  
Combo8.AddItem " 2/26/2007"  
Combo8.AddItem " 2/27/2007"  
Combo8.AddItem " 2/28/2007"  
Combo8.AddItem " 2/29/2007"  
End If  
End Sub  
  
Private Sub Combo11_Click()  
    Text14.Text = Combo11.Text  
    Combo11.Text = ""  
End Sub  
  
Private Sub Combo12_Click()  
    Text15.Text = Combo12.Text  
    Combo12.Text = ""  
End Sub  
  
Private Sub Combo13_Click()  
    Text16.Text = Combo13.Text  
    Combo13.Text = ""  
End Sub  
  
Private Sub Combo14_Click()  
    Text17.Text = Combo14.Text  
    Combo14.Text = ""  
End Sub
```



```

Private Sub Combo2_Click()
    Text5.Text = Combo2.Text
    Combo2.Text = ""
End Sub

Private Sub Combo3_Click()
    If Text8.Text = "" Then
        MsgBox ("Selcect Month first")
    Else
        Text6.Text = Combo3.Text
        Combo3.Text = ""
    End If
End Sub

Private Sub Combo4_Click()
    Text7.Text = Combo4.Text
    Combo4.Text = ""
End Sub

Private Sub Combo5_Click()
    Text8.Text = Combo5.Text
    Combo5.Text = ""

'-----Selectdate-----
If Text8.Text = "January" Then
    Frame6.Visible = True
    Frame7.Visible = True
    Frame8.Visible = True
    Frame9.Visible = True
    Frame10.Visible = True
    Picture9.Visible = True
    Combo3.AddItem " 1/1/2007"
    Combo3.AddItem " 1/2/2007"
    Combo3.AddItem " 1/3/2007"
    Combo3.AddItem " 1/4/2007"
    Combo3.AddItem " 1/5/2007"
    Combo3.AddItem " 1/6/2007"
    Combo3.AddItem " 1/7/2007"
    Combo3.AddItem " 1/8/2007"
    Combo3.AddItem " 1/9/2007"
    Combo3.AddItem " 1/10/2007"
    Combo3.AddItem " 1/11/2007"
    Combo3.AddItem " 1/12/2007"
    Combo3.AddItem " 1/13/2007"
    Combo3.AddItem " 1/14/2007"
    Combo3.AddItem " 1/15/2007"
    Combo3.AddItem " 1/16/2007"
    Combo3.AddItem " 1/17/2007"
    Combo3.AddItem " 1/18/2007"
    Combo3.AddItem " 1/19/2007"
    Combo3.AddItem " 1/20/2007"
    Combo3.AddItem " 1/21/2007"
    Combo3.AddItem " 1/22/2007"
    Combo3.AddItem " 1/23/2007"
    Combo3.AddItem " 1/24/2007"
    Combo3.AddItem " 1/25/2007"

```

```

        Combo3.AddItem " 1/26/2007"
        Combo3.AddItem " 1/27/2007"
        Combo3.AddItem " 1/28/2007"
        Combo3.AddItem " 1/29/2007"
        Combo3.AddItem " 1/30/2007"
        Combo3.AddItem " 1/31/2007"
    End If
    If Text8.Text = "Febuary" Then
        Frame6.Visible = True
        Frame7.Visible = True
        Frame8.Visible = True
        Frame9.Visible = True
        Frame10.Visible = True
        Picture9.Visible = True
        Combo3.AddItem " 2/1/2007"
        Combo3.AddItem " 2/2/2007"
        Combo3.AddItem " 2/3/2007"
        Combo3.AddItem " 2/4/2007"
        Combo3.AddItem " 2/5/2007"
        Combo3.AddItem " 2/6/2007"
        Combo3.AddItem " 2/7/2007"
        Combo3.AddItem " 2/8/2007"
        Combo3.AddItem " 2/9/2007"
        Combo3.AddItem " 2/10/2007"
        Combo3.AddItem " 2/11/2007"
        Combo3.AddItem " 2/12/2007"
        Combo3.AddItem " 2/13/2007"
        Combo3.AddItem " 2/14/2007"
        Combo3.AddItem " 2/15/2007"
        Combo3.AddItem " 2/16/2007"
        Combo3.AddItem " 2/17/2007"
        Combo3.AddItem " 2/18/2007"
        Combo3.AddItem " 2/19/2007"
        Combo3.AddItem " 2/20/2007"
        Combo3.AddItem " 2/21/2007"
        Combo3.AddItem " 2/22/2007"
        Combo3.AddItem " 2/23/2007"
        Combo3.AddItem " 2/24/2007"
        Combo3.AddItem " 2/25/2007"
        Combo3.AddItem " 2/26/2007"
        Combo3.AddItem " 2/27/2007"
        Combo3.AddItem " 2/28/2007"
        Combo3.AddItem " 2/29/2007"
    End If
End Sub

Private Sub Combo6_Click()
    Text9.Text = Combo6.Text
    Combo6.Text = ""
End Sub

Private Sub Combo7_Click()
    Text10.Text = Combo7.Text
    Combo7.Text = ""
End Sub

Private Sub Combo8_Click()

```

```

        Text11.Text = Combo8.Text
        Combo8.Text = ""
End Sub

Private Sub Combo9_Click()
    Text12.Text = Combo9.Text
    Combo9.Text = ""
End Sub

Private Sub Command12_Click()
Dim Edit As Integer
    Edit = MsgBox("Do you want to Edit?", vbQuestion + vbYesNo,
        "delete?")
If Edit = vbYes Then
    SStab1.Tab = 4
End If
End Sub

Private Sub Command13_Click()
    monthly.PrintReport
End Sub

Private Sub Command14_Click()
Dim remove As Integer
    remove = MsgBox("Do you want to delete selected item?",
        vbQuestion + vbYesNo, "delete?")
If remove = vbYes Then
    Adodc1.Recordset.Delete adAffectCurrent
End If
End Sub

Private Sub Command15_Click()
    SStab1.Tab = 0
End Sub

Private Sub Command16_Click()
    FebReport.Show
End Sub

Private Sub Command18_Click()
Dim Edit As Integer
    Edit = MsgBox("Do you want to delete selected item?", vbQuestion
        + vbYesNo, "delete?")
If Edit = vbYes Then
    SStab1.Tab = 4
End If
End Sub

Private Sub Command2_Click()
    End
End Sub

Private Sub Command20_Click()
Dim r As Integer
    r = MsgBox("Do you want to delete selected item?", vbQuestion +
        vbYesNo, "delete?")
If r = vbYes Then

```

```

        Adodc2.Recordset.Delete adAffectCurrent
    End If
End Sub

Private Sub Command21_Click()
    Dim q As Integer
        q = MsgBox("Do you want to delete selected item?", vbQuestion +
            vbYesNo, "delete?")
    If q = vbYes Then
        Adodc3.Recordset.Delete adAffectCurrent
    End If
End Sub

Private Sub Command22_Click()
    If Text13.Text = "January" Then
        Data1.DatabaseName = App.Path & "\stadiumfunc.mdb"
        Data1.RecordSource = "function"
        Data1.Refresh
        Data1.Recordset.FindFirst "Games = '" & Text9 & "'"

'----- Create new Games -----
        If (Data1.Recordset("Games") = (Text9.Text = "")) Or
            (Data1.Recordset("Venue") = (Text10.Text = "")) Or
            (Data1.Recordset("Date") = (Text11.Text = "")) Or
            (Data1.Recordset("Capacity") = (Text12.Text = "")) Then
            MsgBox "Please check detail your new data entry not yet complete
                fill up", vbOKOnly
        End If
    End If

    If (Data1.Recordset("Games") <> (Text9.Text)) Or
        (Data1.Recordset("Venue") <> (Text10.Text)) Or (Data1.Recordset("Date")
        <> (Text11.Text)) Or (Data1.Recordset("Capacity") <> (Text12.Text))
    Then
        MsgBox "Data is not match with previous information. Please
            recheck!! ", vbOKOnly
    End If

    Data1.Recordset.Edit
    Data1.Recordset("Games") = Text14.Text
    Data1.Recordset("Venue") = Text15.Text
    Data1.Recordset("Date") = Text16.Text
    Data1.Recordset("Capacity") = Text17.Text
    Data1.Recordset.Update
    MsgBox "You have successfully make editing!! ", vbOKOnly
    DataGrid1.ClearFields
    Text9.Text = ""
    Text10.Text = ""
    Text11.Text = ""
    Text12.Text = ""
    Text14.Text = ""
    Text15.Text = ""
    Text16.Text = ""
    Text17.Text = ""
    Data1.DatabaseName = App.Path & "\stadiumfunc.mdb"

```

```

Data1.RecordSource = "function"
Data1.Refresh
Do While Not Data1.Recordset.EOF
Data1.Recordset.MoveNext
Loop
Exit Sub

ElseIf Text13.Text = "Febuary" Then
Data2.DatabaseName = App.Path & "\stadiumfunc1.mdb"
Data2.RecordSource = "Febuary"
Data2.Refresh
Data2.Recordset.FindFirst "Games = '" & Text9 & "'"

'----- Create new Games-----
If (Data2.Recordset("Games") = (Text9.Text = "")) Or
(Data2.Recordset("Venue") = (Text10.Text = "")) Or
(Data2.Recordset("Date") = (Text11.Text = "")) Or
(Data2.Recordset("Capacity") = (Text12.Text = "")) Then
    MsgBox "Please check detail your new data entry not yet complete
    fill up", vbOKOnly
Exit Sub
End If

If (Data2.Recordset("Games") <> (Text9.Text)) Or
(Data2.Recordset("Venue") <> (Text10.Text)) Or (Data2.Recordset("Date")
<> (Text11.Text)) Or (Data2.Recordset("Capacity") <> (Text12.Text))
Then
    MsgBox "Data is not match with previous information. Please
    recheck!! ", vbOKOnly
Exit Sub
End If

Data2.Recordset.Edit
Data2.Recordset("Games") = Text14.Text
Data2.Recordset("Venue") = Text15.Text
Data2.Recordset("Date") = Text16.Text
Data2.Recordset("Capacity") = Text17.Text
Data2.Recordset.Update
MsgBox "You have successfully make editing!! ", vbOKOnly
DataGrid2.ClearFields
Text9.Text = ""
Text10.Text = ""
Text11.Text = ""
Text12.Text = ""
Text14.Text = ""
Text15.Text = ""
Text16.Text = ""
Text17.Text = ""
Data2.DatabaseName = App.Path & "\stadiumfunc1.mdb"
Data2.RecordSource = "Febuary"
Data2.Refresh

Do While Not Data2.Recordset.EOF
Data2.Recordset.MoveNext
Loop
Exit Sub

```

```

End If
End Sub

Private Sub Command23_Click()
    SSTab1.Tab = 0
End Sub

Private Sub Command27_Click()
    MacReport.Show
End Sub

Private Sub Command5_Click()
    SSTab1.Tab = 0
End Sub

Private Sub Command6_Click()
    JanReport.Show
End Sub

Private Sub Command8_Click()
    If Text8.Text = "January" Then
        Data1.DatabaseName = App.Path & "\stadiumfunc.mdb"
        Data1.RecordSource = "function"
        Data1.Refresh
        Data1.Recordset.FindFirst "Games = '" & Text4 & "'"

        If (Data1.Recordset("Games") = (Text4.Text = "")) Or
            (Data1.Recordset("Venue") = (Text5.Text = "")) Or
            (Data1.Recordset("Date") = (Text6.Text = "")) Or
            (Data1.Recordset("Capacity") = (Text7.Text = "")) Then
            MsgBox "Please check detail your new data entry not yet complete
                fill up", vbOKOnly
        End If
    End If

    Data1.Recordset.AddNew
    Data1.Recordset("Games") = Text4.Text
    Data1.Recordset("Venue") = Text5.Text
    Data1.Recordset("Date") = Text6.Text
    Data1.Recordset("Capacity") = Text7.Text
    Data1.Recordset.Update
    MsgBox "new data entry has been created", vbOKOnly
    DataGrid1.ClearFields
    Text4.Text = ""
    Text5.Text = ""
    Text6.Text = ""
    Text7.Text = ""
    Text8.Text = ""
    Data1.DatabaseName = App.Path & "\stadiumfunc.mdb"
    Data1.RecordSource = "function"
    Data1.Refresh
    Do While Not Data1.Recordset.EOF
        Data1.Recordset.MoveNext
    Loop
    Exit Sub

    ElseIf Text8.Text = "Febuary" Then

```

```

Data2.DatabaseName = App.Path & "\stadiumfunc.mdb"
Data2.RecordSource = "Function1"
Data2.Refresh
Data2.Recordset.FindFirst "Games = '" & Text4 & "'"
If (Data2.Recordset("Games") = (Text4.Text = "")) Or
(Data2.Recordset("Venue") = (Text5.Text = "")) Or
(Data2.Recordset("Date") = (Text6.Text = "")) Or
(Data2.Recordset("Capacity") = (Text7.Text = "")) Then
    MsgBox "Please check detail your new data entry not yet complete
    fill up", vbOKOnly
Exit Sub
End If

```

```

Data2.Recordset.AddNew
Data2.Recordset("Games") = Text4.Text
Data2.Recordset("Venue") = Text5.Text
Data2.Recordset("Date") = Text6.Text
Data2.Recordset("Capacity") = Text7.Text
Data2.Recordset.Update
    MsgBox "new data entry has been created", vbOKOnly
DataGrid2.ClearFields
Text4.Text = ""
Text5.Text = ""
Text6.Text = ""
Text7.Text = ""
Data2.DatabaseName = App.Path & "\stadiumfunc.mdb"
Data2.RecordSource = "Function1"
Data2.Refresh
Do While Not Data2.Recordset.EOF
Data2.Recordset.MoveNext
Loop
Exit Sub
End If
End Sub

```

```

Private Sub Form_Load()
Data1.DatabaseName = App.Path & "\stadiumfunc.mdb"
Data1.RecordSource = "function"
Data1.Refresh
Do While Not Data1.Recordset.EOF
Data1.Recordset.MoveNext
Loop
Data2.DatabaseName = App.Path & "\stadiumfunc1.mdb"
Data2.RecordSource = "Febuary"
Data2.Refresh
Do While Not Data2.Recordset.EOF
Data2.Recordset.MoveNext
Loop

```

```

'----- Games Type -----
Combo1.AddItem " League Super Match"
Combo1.AddItem " Friendly Match "
Combo1.AddItem " Athletic, MSSM"
'-----Location -----
Combo2.AddItem " Kangar Stadium"
Combo2.AddItem " Uitm Stadium"
Combo2.AddItem " UniMap Stadium"

```

```

'-----Date-----
Combo4.AddItem " >30,000"
Combo4.AddItem " >40,000"
Combo4.AddItem " >50,000"
'-----SelectMonth-----
Combo5.AddItem "January"
Combo5.AddItem "Febuary"
'----- EditGames Type-----
Combo6.AddItem " League Super Match"
Combo6.AddItem " Friendly Match "
Combo6.AddItem " Athletic, MSSM"
Combo11.AddItem " League Super Match"
Combo11.AddItem " Friendly Match "
Combo11.AddItem " Athletic, MSSM"
'-----Location-----
Combo7.AddItem " Kangar Stadium"
Combo7.AddItem " Uitm Stadium"
Combo7.AddItem " UniMap Stadium"
Combo12.AddItem " Kangar Stadium"
Combo12.AddItem " Uitm Stadium"
Combo12.AddItem " UniMap Stadium"
'-----Date-----
Combo9.AddItem "30,000"
Combo9.AddItem "40,000"
Combo9.AddItem "50,000"
Combo14.AddItem "30,000"
Combo14.AddItem "40,000"
Combo14.AddItem "50,000"
'-----SelectMonth-----
Combo10.AddItem "January"
Combo10.AddItem "Febuary"

'-----digital clock -----
Dim i As Integer, xFactor As Integer, yFactor As Integer
'Init PicClip controls
clpDigits.Cols = 11
clpPunctuation.Cols = 8
'Load PicClip bitmaps so can know cell sizes
Call SetColor(0, False)
'Load image controls to hold digits
imgClock(0) = clpDigits.GraphicCell(0)
For i = 1 To 7
    Load imgClock(i)
    'Digit cells are a different size than colon (punctuation)
cells
    If i = 2 Or i = 5 Then
        imgClock(i) = clpPunctuation.GraphicCell(0)
    Else
        imgClock(i) = clpDigits.GraphicCell(0)
    End If
    imgClock(i).Left = imgClock(i - 1).Left + imgClock(i - 1).Width
    imgClock(i).Visible = True
Next i
'Size window to fit time display
xFactor = Width - ScaleWidth: yFactor = Height - ScaleHeight
Move Left, Top, imgClock(7).Left + imgClock(7).Width + 120 +
xFactor, imgClock(0).Height + 240 + yFactor

```



```

        'Show initial time display
        Call ShowCurrTime
        '-----date/time-----
        Dim Today As Variant
        Today = Now
        Text1.Text = Format(Today, "dddd")
        Text2.Text = Format(Today, "mmmm")
        Text3.Text = Format(Today, "YYYY")
    End Sub

Private Sub Label1_Click()
    Form12.Show
    Form3.Hide
End Sub

Private Sub Label1_MouseMove(Button As Integer, Shift As Integer, X As
Single, Y As Single)
Label1.BorderStyle = 0
Label2.BorderStyle = 1
Label3.BorderStyle = 1
Label4.BorderStyle = 1
Label5.BorderStyle = 1
Label6.BorderStyle = 1
End Sub

Private Sub Label2_MouseMove(Button As Integer, Shift As Integer, X As
Single, Y As Single)
Label1.BorderStyle = 1
Label2.BorderStyle = 0
Label3.BorderStyle = 1
Label4.BorderStyle = 1
Label5.BorderStyle = 1
Label6.BorderStyle = 1
End Sub

Private Sub Label3_Click()
    Form3.Hide
    Form6.Show
End Sub

Private Sub Label3_MouseMove(Button As Integer, Shift As Integer, X As
Single, Y As Single)
Label1.BorderStyle = 1
Label2.BorderStyle = 1
Label3.BorderStyle = 0
Label4.BorderStyle = 1
Label5.BorderStyle = 1
Label6.BorderStyle = 1
End Sub

Private Sub Label4_Click()
    Picture18.Visible = False
    Data1.DatabaseName = App.Path & "\stadiumfunc.mdb"
    Data1.RecordSource = "function"
    Data1.Refresh
    Data1.Recordset.FindFirst "Games = '" & MSFlexGrid1 & "'"
End Sub

```

```
Private Sub Label4_MouseMove(Button As Integer, Shift As Integer, X As
Single, Y As Single)
Label1.BorderStyle = 1
Label2.BorderStyle = 1
Label3.BorderStyle = 1
Label4.BorderStyle = 0
Label5.BorderStyle = 1
Label6.BorderStyle = 1
End Sub
```

```
Private Sub Label5_Click()
    SSTab1.Tab = 0
End Sub
```

```
Private Sub Label5_MouseMove(Button As Integer, Shift As Integer, X As
Single, Y As Single)
Label1.BorderStyle = 1
Label2.BorderStyle = 1
Label3.BorderStyle = 1
Label4.BorderStyle = 1
Label5.BorderStyle = 0
Label6.BorderStyle = 1
End Sub
```

```
Private Sub Label6_Click()
    SSTab1.Tab = 4
End Sub
```

```
Private Sub Label6_MouseMove(Button As Integer, Shift As Integer, X As
Single, Y As Single)
Label1.BorderStyle = 1
Label2.BorderStyle = 1
Label3.BorderStyle = 1
Label4.BorderStyle = 1
Label5.BorderStyle = 1
Label6.BorderStyle = 0
End Sub
```

```
Private Sub mnuFileExit_Click()
    'Unload form to terminate program
    Unload Me
    Unload monthly
    Unload Form3(access)
End
End Sub
```

```
Private Sub mnuFileReportDisplay_Click()
    monthly.Show
End Sub
```

```
Private Sub mnuFileReportPrint_Click()
monthly.PrintReport

End Sub
```

```
Private Sub mnuOptColor_Click(Index As Integer)
```

```

'Update display color
    Call SetColor(Index, True)
End Sub

Private Sub SStab1_Click(PreviousTab As Integer)
Text8.Text = ""
Frame6.Visible = False
Frame7.Visible = False
Frame8.Visible = False
Frame9.Visible = False
Frame10.Visible = False
Picture9.Visible = False
End Sub

Private Sub Timer1_Timer()
'Update time display
    Call ShowCurrTime
End Sub

Private Sub SetColor(clr As Integer, updateTime As Integer)
    Static currColor As Integer
    Dim i As Integer

    'Set new color index
    currColor = clr
    'Load PicClip controls with bitmap for selected color
    clpDigits = imgDigits(currColor)
    clpPunctuation = imgPunctuation(currColor)
    'Check/uncheck menu items to indicate current color
    For i = 0 To 2
        mnuOptColor(i).Checked = (i = currColor)
    Next i
    'Update time display if requested
    If updateTime Then Call ShowCurrTime
End Sub

Private Sub ShowCurrTime()
    Static showColon As Integer
    Dim i As Integer, buff As String, aChar As String

    'If window is minimized, show time in caption
    If WindowState = 1 Then
        Caption = Format$(Now, "h:mm:ss am/pm")
    Else
        'Get current time in buff
        buff = Format$(Now, "hh:mm:ss am/pm")
        'Hide first character if it is "0"
        aChar = Mid$(buff, 1, 1)
        If aChar = "0" Then
            imgClock(0) = clpDigits.GraphicCell(10)
        Else
            imgClock(0) = clpDigits.GraphicCell(Asc(aChar) - Asc("0"))
        End If
        'Display remaining digits
        For i = 2 To 8
            aChar = Mid$(buff, i, 1)
            If aChar = ":" Then

```

```

        If showColon Then
            imgClock(i - 1) = clpPunctuation.GraphicCell(2)
        Else
            imgClock(i - 1) = clpPunctuation.GraphicCell(3)
        End If
    Else
        imgClock(i - 1) = clpDigits.GraphicCell(Asc(aChar) -
Asc("0"))
    End If
Next i
End If
'Toggle display of colon
showColon = Not showColon
End Sub

Private Sub Form_Resize()
    'Since we display the time in the caption when the form is
    'minimized, restore caption if we are no longer minimized
    If WindowState = 2 Then
        Caption = "Digits Demo"
    Else
        'If window has just been minimized, update time
        Call ShowCurrTime
    End If
End Sub

Private Sub Timer3_Timer()
    'Static Count As Integer
    If (l3.Left + l3.Width) <= 0 Then
        l3.Left = Form1.Width
    End If
    l3.Left = l3.Left - 100
End Sub

Private Sub Timer4_Timer()
    'Static Count As Integer
    If (p1.Left + p1.Width) <= 0 Then
        p1.Left = Form1.Width
    End If
    p1.Left = p1.Left - 100
End Sub

\*****
                                New User
\*****
Private Sub Command5_Click()
    Dim r As Integer
    If (List1.List(List1.ListIndex)) = "" Or (List1.List(List1.ListIndex))
= "Administrator" Then Exit Sub
    r = MsgBox("Warning! You sure want to remove this username", vbYesNo)
    If r = vbYes Then

    Data1.DatabaseName = App.Path & "\login.mdb"
    Data1.RecordSource = "user"
    Data1.Refresh
    Data1.Recordset.FindFirst "Username = '" & List1.Text & "'"

```

```

Data1.Recordset.Delete
List1.Clear
Data1.DatabaseName = App.Path & "\\login.mdb"
Data1.RecordSource = "user"
Data1.Refresh
Do While Not Data1.Recordset.EOF
List1.AddItem Data1.Recordset("Username")
Data1.Recordset.MoveNext
Loop
End If
End Sub

Private Sub Command6_Click()
    Form4.Hide
    Form1.Show
End Sub

Private Sub Command7_Click()
Data1.DatabaseName = App.Path & "\\login.mdb"
Data1.RecordSource = "user"
Data1.Refresh
Data1.Recordset.FindFirst "Username = '" & Text1 & "'"
'----- Create new Username-----
If (Data1.Recordset("Username") = (Text1.Text = "")) Or
(Data1.Recordset("Password") = (Text2.Text = "")) Or
(Data1.Recordset("Password") = (Text3.Text = "")) Then
    MsgBox "Please check your detail below 'Username' or 'Password'
or 'Confirm Password' not yet fill in ", vbOKOnly
    Text2.Text = ""
    Text3.Text = ""
Exit Sub
End If

If Data1.Recordset("Username") = Text1.Text Then
    MsgBox "This Username already in used. Choose another
'Username'.", vbOKOnly
Exit Sub
End If

If Data1.Recordset("Username") <> Text1.Text Then
    Data1.Recordset.AddNew
    Data1.Recordset("Username") = Text1.Text
    Data1.Recordset("Password") = Text2.Text
If Data1.Recordset("Password") <> Text3.Text Then
    MsgBox "Your Password dosen't match. Retype your Password",
vbOKOnly
    Text2.Text = ""
    Text3.Text = ""
Exit Sub
End If

Data1.Recordset.Update
MsgBox "new user created", vbOKOnly

Text1.Text = ""
Text2.Text = ""
Text3.Text = ""

```

```

List1.Clear
Data1.DatabaseName = App.Path & "\\login.mdb"
Data1.RecordSource = "user"
Data1.Refresh
Do While Not Data1.Recordset.EOF
List1.AddItem Data1.Recordset("Username")
Data1.Recordset.MoveNext
Loop
End If
Exit Sub
End Sub

Private Sub Command8_Click()
    Form4.Hide
    Form2.Show
End Sub

Private Sub Form_Load()
Command1.BackColor = green
Data1.DatabaseName = App.Path & "\\login.mdb"
Data1.RecordSource = "user"
Data1.Refresh
Do While Not Data1.Recordset.EOF
List1.AddItem Data1.Recordset("Username")
Data1.Recordset.MoveNext
Loop
End Sub

\*****
                                Change Password
\*****
Private Sub Command2_Click()
Data1.DatabaseName = App.Path & "\\login.mdb"
Data1.RecordSource = "user"
Data1.Refresh
Data1.Recordset.FindFirst "Username = '" & Text1 & "'"
'-----Create new Password-----
If (Text1.Text = "") Or (Text2.Text = "") Or (Text3.Text = "") Or
(Text6.Text = "") Then
    MsgBox "Please complete your detail below 'Username' or 'Old
    Password' or 'New Password Password' or 'Verify New Password' ! ",
    vbOKOnly
Exit Sub
End If

'----- Wrong username-----
If Data1.Recordset("Username") <> Text1.Text Then
MsgBox "Your Username dosen't match. Retype your Username if wish to
continue change the password.", vbOKOnly
Text6.Text = ""
Text2.Text = ""
Text3.Text = ""
Exit Sub
End If

'----- correct username but wrong old password-----
If Data1.Recordset("Username") = Text1.Text Then
If Data1.Recordset("Password") <> Text6.Text Then

```

```

MsgBox "The old Password is invalid.", vbOKOnly
Exit Sub
End If
End If
'----- correct username but password already in used-----
If Data1.Recordset("Username") = Text1.Text Then
If (Data1.Recordset("Password") = Text2.Text) And
(Data1.Recordset("Password") = Text3.Text) Then
MsgBox "This Password is already in used. Choose another 'Password'.",
vbOKOnly
Text2.Text = ""
Text3.Text = ""
Exit Sub
End If
End If
'----- correct username but new password not match-----
If Data1.Recordset("Username") = Text1.Text Then
If Text2.Text <> Text3.Text Then
MsgBox "Your new Password not match. Retype your new password.",
vbOKOnly
Text2.Text = ""
Text3.Text = ""
Exit Sub
End If
End If
'----- correct username and successfully change new password-----
If Data1.Recordset("Username") = Text1.Text Then
If Data1.Recordset("Password") <> Text2.Text Then
Data1.Recordset.Delete
Data1.Refresh
Text4.Text = Text1.Text
Text5.Text = Text2.Text
Data1.Recordset.AddNew
Data1.Recordset("Username") = Text1.Text
Data1.Recordset("Password") = Text2.Text
Data1.Recordset.Update
MsgBox "You have successfully change your new Password", vbOKOnly
Text1.Text = ""
Text2.Text = ""
Text3.Text = ""
Text6.Text = ""
Data1.DatabaseName = App.Path & "\login.mdb"
Data1.RecordSource = "user"
Data1.Refresh
Do While Not Data1.Recordset.EOF
Data1.Recordset.MoveNext
Loop
End If
End If
End Sub

Private Sub Command3_Click()
Text1.Text = ""
Text2.Text = ""
Text3.Text = ""
Text6.Text = ""
End Sub

```

```

Private Sub Command4_Click()
Dim i As Integer
i = MsgBox("Are sure want to quit this program?", vbYesNo)
If i = vbYes Then
    Form5.Hide
    Form2.Show
    Text4.Text = ""
    Text5.Text = ""
End If
End Sub

Private Sub mnuChangePassword_Click()
Data1.DatabaseName = App.Path & "\login.mdb"
Data1.RecordSource = "user"
Data1.Refresh
Data1.Recordset.FindFirst "Username = '" & Text1 & "'"
If (Text1.Text = "") Or (Text2.Text = "") Or (Text3.Text = "") Or
(Text6.Text = "") Then
MsgBox "Please complete your detail below 'Username' or 'Old Password'
or 'New Password Password' or 'Verify New Password' ! ", vbOKOnly
Exit Sub
End If
'1----- Wrong username-----
If Data1.Recordset("Username") <> Text1.Text Then
MsgBox "Your Username dosen't match. Retype your Username if wish to
continue change the password.", vbOKOnly
Text6.Text = ""
Text2.Text = ""
Text3.Text = ""
Exit Sub
End If
'2----- correct username but wrong old password-----
If Data1.Recordset("Username") = Text1.Text Then
If Data1.Recordset("Password") <> Text6.Text Then
MsgBox "The old Password is invalid.", vbOKOnly
Exit Sub
End If
End If
'3----- correct username but password already in used-----
If Data1.Recordset("Username") = Text1.Text Then
If (Data1.Recordset("Password") = Text2.Text) And
(Data1.Recordset("Password") = Text3.Text) Then
MsgBox "This Password is already in used. Choose another 'Password'.",
vbOKOnly
Text2.Text = ""
Text3.Text = ""
Exit Sub
End If
End If

'4---- correct username but new password not match-----
If Data1.Recordset("Username") = Text1.Text Then
If Text2.Text <> Text3.Text Then
MsgBox "Your new Password not match. Retype your new password.",
vbOKOnly

```



```

Text2.Text = ""
Text3.Text = ""
Exit Sub
End If
End If
'5--- correct username and successfully change new password---
If Data1.Recordset("Username") = Text1.Text Then
If Data1.Recordset("Password") <> Text2.Text Then
    Data1.Recordset.Delete
    Data1.Refresh
    Text4.Text = Text1.Text
    Text5.Text = Text2.Text
    Data1.Recordset.AddNew
    Data1.Recordset("Username") = Text1.Text
    Data1.Recordset("Password") = Text2.Text
    Data1.Recordset.Update
    MsgBox "You have successfully change your new Password", vbOKOnly
    Text1.Text = ""
    Text2.Text = ""
    Text3.Text = ""
    Text6.Text = ""
    Data1.DatabaseName = App.Path & "\login.mdb"
    Data1.RecordSource = "user"
    Data1.Refresh
    Do While Not Data1.Recordset.EOF
    Data1.Recordset.MoveNext
    Loop
End If
End If
End Sub

Private Sub mnuExit_Click()
    End
End Sub

\*****
                                Counter System
\*****

Option Explicit
Dim masuk As Long
Dim keluar As Integer

Private Sub Check1_Click()
If Check1.Value = 1 Then
    Frame8.Enabled = True
End If

If Check1.Value = 0 Then
    Frame8.Enabled = False
End If
End Sub

Private Sub Check2_Click()
If Check2.Value = 1 Then
    Frame9.Enabled = True
End If

```

```

If Check2.Value = 0 Then
    Frame9.Enabled = False
End If
End Sub

Private Sub Combol_Click()
    Text5.Text = Combol.Text
    Combol.Text = ""
End Sub

Private Sub Command1_Click()
    Timer2.Enabled = False
    Timer3.Enabled = True
    Timer2.Enabled = False
    Shape3.FillColor = &HFF&
    '***** Record *****
    Text2.Text = lblTime.Caption
    Text3.Text = datel.Caption
End Sub

Private Sub Command10_Click()
    audience.Show
End Sub

Private Sub Command11_Click()
    Timer6.Enabled = True
End Sub

Private Sub Command12_Click()
    Timer7.Enabled = True
End Sub

Private Sub Command13_Click()
    Timer8.Enabled = True
End Sub

Private Sub Command14_Click()
    Timer6.Enabled = True
    Timer7.Enabled = True
    Timer8.Enabled = True
End Sub

Private Sub Command15_Click()
    End
End Sub

Private Sub Command2_Click()
    '***** Record *****
    If Text7.Text = "" And Text8.Text = "" Then
        MsgBox ("Set the Start and Stop time")
    ElseIf (Text7.Text <> Format("h:mm:ss ampm")) Then
        MsgBox ("Invalid Start Time Format!")
    ElseIf (Text8.Text <> Format("h:mm:ss ampm")) Then
        MsgBox ("Invalid Stop Time Format!")
    Else
        Text1.Text = lblTime.Caption
    End If
End Sub

```

```

        Text3.Text = datel.Caption
        Timer2.Enabled = True
        Timer3.Enabled = False
        Shape3.FillColor = &HFF&
        Command1.Enabled = True
End If
End Sub

Private Sub Command3_Click()
    Timer6.Enabled = True
    Timer7.Enabled = True
    Timer8.Enabled = True
End Sub

Private Sub Form_Load()
    masuk = 0
    keluar = 0
    Data1.DatabaseName = App.Path & "\counter.mdb"
    Data1.RecordSource = "data"
    Data1.Refresh
    Do While Not Data1.Recordset.EOF
        Data1.Recordset.MoveNext
    Loop
    '*****
    Combol.AddItem " Kangar Stadium"
    Combol.AddItem " Uitm Stadium"
    Combol.AddItem " UniMap Stadium"
    '*****
    Dim i As Integer, xFactor As Integer, yFactor As Integer
    'Init PicClip controls
    clpDigits.Cols = 11
    clpPunctuation.Cols = 8
    'Load PicClip bitmaps so can know cell sizes
    Call SetColor(0, False)
    'Load image controls to hold digits
    imgClock(0) = clpDigits.GraphicCell(0)
    For i = 1 To 7
        Load imgClock(i)
        'Digit cells are a different size than colon (punctuation)
cells
        If i = 2 Or i = 5 Then
            imgClock(i) = clpPunctuation.GraphicCell(0)
        Else
            imgClock(i) = clpDigits.GraphicCell(0)
        End If
        imgClock(i).Left = imgClock(i - 1).Left + imgClock(i - 1).Width
        imgClock(i).Visible = True
    Next i
    'Size window to fit time display
    xFactor = Width - ScaleWidth: yFactor = Height - ScaleHeight
    Move Left, Top, imgClock(7).Left + imgClock(7).Width + 120 +
xFactor, imgClock(0).Height + 240 + yFactor
    'Show initial time display
    Call ShowCurrTime
    '*****
    Dim Today As Variant
    Today = Now

```

```

date1.Caption = Format(Today, "dd/mm/yyyy")
Today = Date
'*****
    timDisplay.Interval = 1000
    lblDay.Caption = "Monday"
    lblDay.FontBold = True
    lblDay.FontSize = 24

    lblTime.Caption = "00:00:00 PM"
    lblTime.FontBold = True
    lblTime.FontSize = 24

    lblYear.Alignment = 2
    lblYear.Caption = 1998
    lblYear.FontBold = True
    lblYear.FontSize = 24

    lblNumber.Alignment = 2
    lblNumber.Caption = 31

    lblNumber.FontBold = True
    lblNumber.FontSize = 72

    lblMonth.Alignment = 2
    lblMonth.Caption = "March"
    lblMonth.FontBold = True
    lblMonth.FontSize = 24

    timDisplay.Interval = 1000
    timDisplay.Enabled = True
    Timer9.Enabled = True
    Timer10.Enabled = True
    Timer11.Enabled = True
End Sub

Private Sub HScroll11_Change()
    Form12.Caption = Format(HScroll11.Value)
    Form12.BackColor = HScroll11.Value + 100000
End Sub

Private Sub Label7_Click()
If Text6.Text = "" Then
    MsgBox ("total audience?")
End If
If Text5.Text = "" Then
    MsgBox ("Select Stadium Location")
Else
    Timer13.Enabled = True
    Label8.BackColor = &HFF&
    Shape2.FillColor = &HFF&
    Timer1.Enabled = True
    Label7.Enabled = False
    Check2.Enabled = False
'***** Record *****
    Text1.Text = lblTime
    Text3.Text = date1.Caption + lblTime.Caption
    sum1.Text = cup1.Text - Text6.Text

```

```

        note.Caption = "Latest Update Event: Total Audience: " &
        (Text6.Text + "person")
        notel.Caption = " Total Out: " & (out.Caption + "person")
        note2.Caption = " Total Going in: " & (goin.Caption + "person")
End If
End Sub

Private Sub Label8_Click()
    Data1.DatabaseName = App.Path & "\counter.mdb"
    Data1.RecordSource = "data"
    Data1.Refresh
    Data1.Recordset.FindFirst "TOTALAUDIENCE = '" & Text6 & "'"
    Data1.Recordset.AddNew
    Data1.Recordset("TOTALAUDIENCE") = Text6.Text
    Data1.Recordset("ENTER") = goin.Caption
    Data1.Recordset("OUT") = out.Caption
    Data1.Recordset("TIME") = Text1.Text
    Data1.Recordset("DATE") = date1.Caption
    Data1.Recordset("STADIUM") = Text5.Text
    Data1.Recordset("DATE/TIMERECORDED") = Text3.Text
    Data1.Recordset.Update
    Data1.DatabaseName = App.Path & "\counter.mdb"
    Data1.RecordSource = "data"
    Data1.Refresh
    Do While Not Data1.Recordset.EOF
        Data1.Recordset.MoveNext
    Loop

Dim i As Integer
i = MsgBox("Are sure to terminate this program", vbYesNo)
If i = vbYes Then
    Timer1.Enabled = False
    Label7.Enabled = True
    Timer13.Enabled = False 'sensor timer
    Label8.BackColor = &HFF00&
    Shape2.FillColor = &HFF00&
    Label7.BackColor = &HFF&
    Shapel.FillColor = &HFF&
End If

Text3.Text = date1.Caption + lblTime.Caption
Text2.Text = lblTime.Caption
Check2.Enabled = True

End Sub
Private Sub timDisplay_Timer()

Dim Today As Variant
Today = Now
lblDay.Caption = Format(Today, "dddd")
lblMonth.Caption = Format(Today, "mmmm")
lblYear.Caption = Format(Today, "yyyy")
lblNumber.Caption = Format(Today, "d")
lblTime.Caption = Format(Today, "h:mm:ss ampm")

End Sub

```

```

Private Sub Timer1_Timer()
If Shape1.FillColor = &HFF0000 Then
Shape1.FillColor = &HFF&
Else
Shape1.FillColor = &HFF0000
End If
End Sub

Private Sub Timer10_Timer()
'Static Count As Integer
    If (note1.Left + note1.Width) <= 0 Then
        note1.Left = Form12.Width

        End If

        note1.Left = note1.Left - 100
End Sub

Private Sub Timer11_Timer()
'Static Count As Integer
    If (note2.Left + note2.Width) <= 0 Then
        note2.Left = Form12.Width

        End If

        note2.Left = note2.Left - 100
End Sub

Private Sub Timer13_Timer()
'*****sensor program*****
Dim B As Integer
Dim C As Integer

B = PortIn(889)
C = PortIn(889)
Text9.Text = B
Text10.Text = C
If Text9.Text = 88 Then
masuk = masuk + 1
End If
If Text10.Text = 119 Then
keluar = keluar + 1
End If
goin.Caption = masuk
out.Caption = keluar
'*****
End Sub

Private Sub Timer2_Timer()

If Shape3.FillColor = &HFF& Then
Shape3.FillColor = &HFF00&
Else

```

```

Shape3.FillColor = &HFF&
End If

If Text8.Text = lblTime.Caption Then
Timer2.Enabled = False
Shape3.FillColor = &HFF&
Timer3.Enabled = True

End If

End Sub

Private Sub Timer3_Timer()

If Shape4.FillColor = &HFF& Then
Shape4.FillColor = &HFF00&
Else
Shape4.FillColor = &HFF&
End If

End Sub

Private Sub Form_Resize()
'Since we display the time in the caption when the form is
'minimized, restore caption if we are no longer minimized
If WindowState = 2 Then
Caption = "Digits Demo"
Else
'If window has just been minimized, update time
Call ShowCurrTime
End If
End Sub

Private Sub ShowCurrTime()
Static showColon As Integer
Dim i As Integer, buff As String, aChar As String

'If window is minimized, show time in caption
If WindowState = 1 Then
Caption = Format$(Now, "h:mm:ss am/pm")
Else
'Get current time in buff
buff = Format$(Now, "hh:mm:ss am/pm")
'Hide first character if it is "0"
aChar = Mid$(buff, 1, 1)
If aChar = "0" Then
imgClock(0) = clpDigits.GraphicCell(10)
Else
imgClock(0) = clpDigits.GraphicCell(Asc(aChar) - Asc("0"))
End If
'Display remaining digits
For i = 2 To 8
aChar = Mid$(buff, i, 1)
If aChar = ":" Then
If showColon Then
imgClock(i - 1) = clpPunctuation.GraphicCell(2)
Else

```

```

        imgClock(i - 1) = clpPunctuation.GraphicCell(3)
    End If
Else
    imgClock(i - 1) = clpDigits.GraphicCell(Asc(aChar) -
Asc("0"))
    End If
Next i
End If
'Toggle display of colon
showColon = Not showColon
End Sub

Private Sub Timer4_Timer()
Call ShowCurrTime
End Sub
Private Sub mnuFileExit_Click()
'Unload form to terminate program
Unload Me
End Sub
Private Sub mnuOptColor_Click(Index As Integer)
'Update display color
Call SetColor(Index, True)
End Sub

Private Sub SetColor(clr As Integer, updateTime As Integer)
Static currColor As Integer
Dim i As Integer
'Set new color index
currColor = clr
'Load PicClip controls with bitmap for selected color
clpDigits = imgDigits(currColor)
clpPunctuation = imgPunctuation(currColor)
'Check/uncheck menu items to indicate current color
For i = 0 To 2
    mnuOptColor(i).Checked = (i = currColor)
Next i
'Update time display if requested
If updateTime Then Call ShowCurrTime
End Sub
Private Sub Timer5_Timer()
If Text8.Text = lblTime.Caption Then
Timer2.Enabled = False
End If
End Sub
Private Sub Timer6_Timer()
Dim Counter As Long
Dim i As Long
Dim a As Long
While Not bar1.Value = out.Caption
For Counter = 1 To out.Caption
    bar1.Value = Counter
    Counter = Counter + 1
    Label12.Caption = out.Caption & "person"
For i = 1 To 5000
    Next i
    For a = 1 To 5000
    Next a

```



```

        Next Counter
    Wend
End Sub
Private Sub Timer7_Timer()
Dim Counter As Long
Dim i As Long
Dim a As Long
While Not bar2.Value = goin.Caption
For Counter = 1 To goin.Caption
    bar2.Value = Counter
    Counter = Counter + 1
    Label3.Caption = goin.Caption & "person"

For i = 1 To 5000
    Next i
    For a = 1 To 5000
    Next a
    Next Counter
Wend
End Sub
Private Sub Timer8_Timer()
Dim Counter As Long
Dim i As Long
Dim a As Long
While Not bar3.Value = Text6.Text
For Counter = 1 To Text6.Text
    bar3.Value = Counter
    Counter = Counter + 1
    Label4.Caption = Text6.Text & "person"
For i = 1 To 5000
    Next i
    For a = 1 To 5000
    Next a
    Next Counter
Wend
    If bar3.Value = Text6.Text Then
        Timer8.Enabled = False
    End If
End Sub
Private Sub Timer9_Timer()
'Static Count As Integer
    If (note.Left + note.Width) <= 0 Then
        note.Left = Form12.Width

        End If
        note.Left = note.Left - 200

End Sub
Private Sub VScroll11_Change()
    Form12.Caption = Format(VScroll11.Value)
    Form12.BackColor = VScroll11.Value + 100000
End Sub
Private Sub VScroll11_KeyPress(KeyAscii As Integer)
If KeyAscii = 47 Or KeyAscii = 92 Then MsgBox ("ok")
End If
End Sub

```