



INVENTORS:

- 1) NOOR ILYA BINTI KOSMADI**
- 2) SITI YASHIDAH BINTI MOHA**
- 3) SALWANI SAAD**
- 4) NUR AZIELYNIE ANNUAR**
- 5) MAISARAH BINTI AHMAD**

INTRODUCTION

**EX
10**

***PARQUET FROM
SHELL***

AMED YAZID

**CONTACT DETAIL:
School of Environmen
Universiti Malaysia Pe
Kompleks Pusat Peng
02600 Arau Perlis**

TEL: 04 - 979 8626 FAX

NOVELTY AND COMM

M COCONUT L

**tal Engineering
rlis
ajian Jejawi 3**

K: 04 - 979 8636

ERCIAL POTENTIAL

Natural resources like wood are illegal logging and the widely usage of coconut shell in parquet making can do. Coconut shell are not properly employ source and at the same time can cause. Reductions of coconut in Malaysia are a Pahat, Miri, Lahat Datu and Mukah. If coconut percent of consumption was to is 20% from respondents do not use coconut in daily life.

Comfortability of a house depend parquet is not slippery and may not cause when step on it. Floor surface's give concept, needs and practicality of a design give the consumers a satisfaction with the ecstatic value with beautiful of pattern from

PRODUCT DESCRIPTION

OBJECTIVES:

- To reduce use of wood in construction of
- To maximize the usage in excessive of coconut
- To reduce the cost as wood is expensive

To make this product, Methyl is used as bonding agent added with mixed with the coconut shell that in pieces 0.5 mm to 1mm with mixing ratio are generally waterproof, and do not suitable to used in making parquet are proven environmental friendly binder. shell, it is crushed into small pieces, 1

decreasing nowadays because of wood itself. So, the application of decrease the usage of wood. The used and cause wasting of the environmental pollution. The product Bagan Datoh, Teluk Intan, Batu was found that Sabak Bernam is high where percentage fraction coconut and 80% remainder use

leads to the parquet used. A good cause falls and foots will not pain identity and style to achieve the modern house. This new product will have the comfortabilities and also have come from the coconut shell.

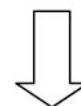
of finishes.

coconut shell

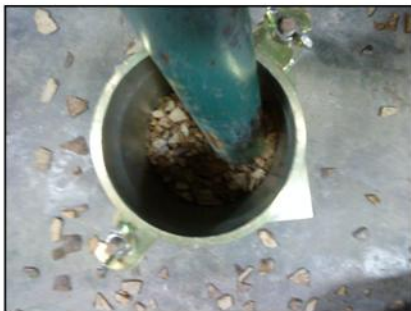
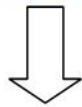
is compared to coconut shell .

ethylene diphenyl isocyanate (MDI) with some rice straw and rice husk have been crushed into small particles. The ratio is 2:2:6 for one sample. MDI contains formaldehyde which is considered the most important is MDI is reduced. After cleaning the coconut shell the size itself can give the par-

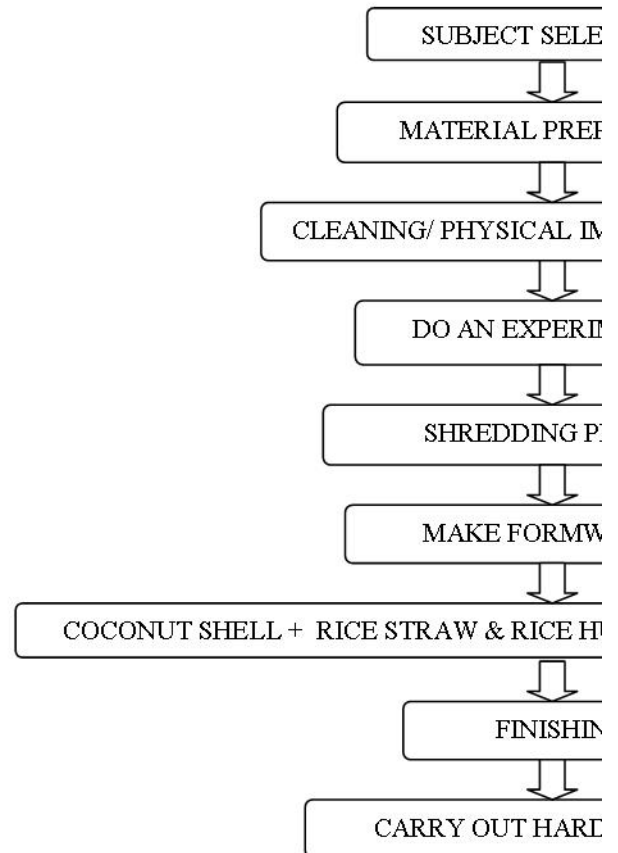
Nowadays, other than looking for different and unique material. Coconut shell has low moisture content. From the test that have been done, it have 13.72 % of moisture content. This product have their own value from coconut shell itself. Coconut shell can give a lot of profits that can be combined with the existing product. Moreover, it can reduce the environment from pollution by converting rice husk into the parquet, which is created more.



For comfortability, customers usually
prefer a product that can give them satisfac-
tory water absorption compared to wood.
When done, it is shown that coconut shell
content compared to wood has 15%.
The purity and aesthetic value from the co-
conut shells are easy to find and also cheap so it
makes this product cheaper compared
to wood. Meanwhile, at the same time can protect
the floor. With the additional of rice straw and
the strength of the parquet can be in-



quet more strength. Then, mixed it wit
rice husk in mould and compressed it
teresting, shellac is apply to it to give t



In MDI and some rice straw and . To make the parquet more in- the shiny effect.



CTION

PARATION

MPURITIES REMOVAL

MENT ON

ROCESS

ORK

USK MIXTURE PROCESS WITH MDI

IG

NESS TEST

