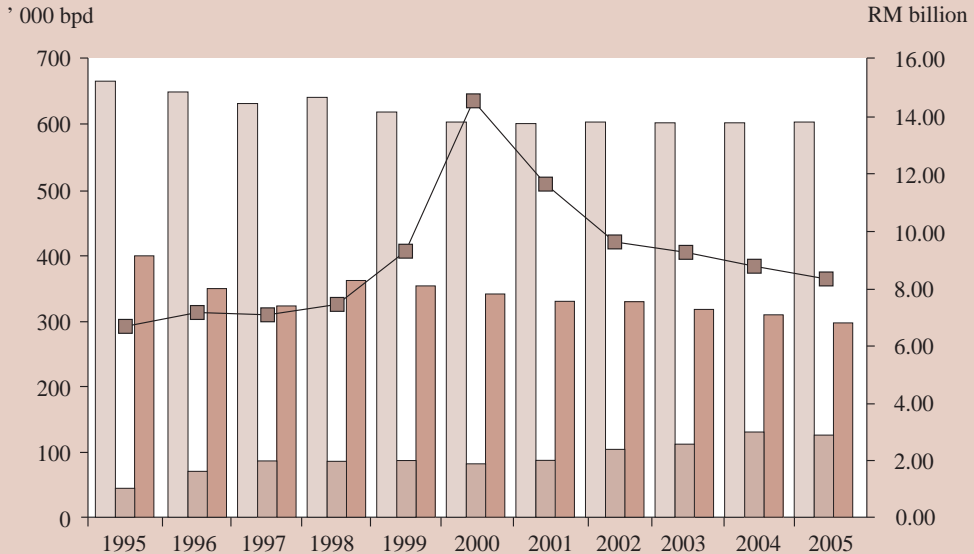


## CRUDE OIL AND CONDENSATE<sup>1</sup> PRODUCTION, EXPORT VOLUME AND VALUE, 1995-2005



Crude Oil ('000 bpd)	663	647	629	640	612	606	600	600	600	600	600
Condensate ('000 bpd)	42	70	85	85	83	74	82	105	110	128	102
Export Volume ('000 bpd)	399	364	330	375	369	345	332	331	319	313	302
Export Value (RM billion)	6.70	7.21	7.07	7.51	9.31	14.24	10.62	9.60	9.13	8.82	8.39

Note: <sup>1</sup> A crude oil component derived from natural gas streams, comprising pentane and heavier hydrocarbons